

**Scrutiny Standing  
Panel Agenda**



**Safer, Cleaner, Greener Scrutiny Standing Panel  
Tuesday, 15th April, 2014**

You are invited to attend the next meeting of **Safer, Cleaner, Greener Scrutiny Standing Panel**, which will be held at:

**Committee Room 1, Civic Offices, High Street, Epping  
on Tuesday, 15th April, 2014  
at 7.30 pm .**

**Glen Chipp  
Chief Executive**

**Democratic Services  
Officer**

Adrian Hendry, Office of the Chief Executive  
email: [democraticservices@eppingforestdc.gov.uk](mailto:democraticservices@eppingforestdc.gov.uk) Tel:  
01992 564246

**Members:**

Councillors Mrs J Lea (Chairman), Mrs H Brady (Vice-Chairman), K Avey, R Butler, Mrs T Cochrane, G Chambers, L Girling, Ms Y Knight, S Murray, Mrs M Sartin, Mrs P Smith and P Spencer

**SUBSTITUTE NOMINATION DEADLINE:**

**18:30**

**1. APOLOGIES FOR ABSENCE**

**2. SUBSTITUTE MEMBERS (COUNCIL MINUTE 39 - 23.7.02)**

(Assistant to the Chief Executive) To report the appointment of any substitute members for the meeting.

**3. NOTES OF THE LAST MEETING (Pages 3 - 6)**

To agree the notes of the last meeting held on 11<sup>th</sup> February 2014.

**4. DECLARATIONS OF INTEREST**

(Assistant to the Chief Executive) To declare interests in any items on the agenda.

In considering whether to declare a personal or a prejudicial interest under the Code

of Conduct, Overview & Scrutiny members are asked pay particular attention to paragraph 11 of the Code in addition to the more familiar requirements.

This requires the declaration of a personal and prejudicial interest in any matter before an OS Committee which relates to a decision of or action by another Committee or Sub Committee of the Council, a Joint Committee or Joint Sub Committee in which the Council is involved and of which the Councillor is also a member.

Paragraph 11 does not refer to Cabinet decisions or attendance at an OS meeting purely for the purpose of answering questions or providing information on such a matter.

**5. TERMS OF REFERENCE AND WORK PROGRAMME (Pages 7 - 10)**

(Chairman / Lead Officer) The Overview and Scrutiny Committee has agreed the Terms of Reference of this Panel and associated Work Programme. This is attached. The Panel are asked at each meeting to review both documents.

**6. PRESENTATION ON THE COMPARATIVE OVERVIEW OF CRIME IN THE DISTRICT BETWEEN 2012 AND 2013**

A short presentation will be given of a comparative overview of crime between 2012 and 2013 in Epping Forest District.

**7. COMMUNITY SAFETY PARTNERSHIP ASSESSMENT 2014-15 AND THE EFDC COMMUNITY SAFETY PARTNERSHIP PLAN. (Pages 11 - 48)**

(Director of Communities) To review and comment on the Community Safety Partnership Assessment document for 2014/15.

**8. EPPING FOREST DISTRICT COUNCIL COMMUNITY SAFETY PARTNERSHIP PLAN (Pages 49 - 76)**

(Director of Communities) To review and comment on the Community Safety Partnership Plan.

**9. REPORTS TO BE MADE TO THE NEXT MEETING OF THE OVERVIEW AND SCRUTINY COMMITTEE**

To consider which reports (if any) are ready to be submitted to the Overview and Scrutiny Committee at its next meeting.

**EPPING FOREST DISTRICT COUNCIL  
NOTES OF A MEETING OF SAFER, CLEANER, GREENER SCRUTINY STANDING  
PANEL  
HELD ON TUESDAY, 11 FEBRUARY 2014  
IN COMMITTEE ROOM 1, CIVIC OFFICES, HIGH STREET, EPPING  
AT 7.30 - 8.53 PM**

<b>Members Present:</b>	Mrs J Lea (Chairman), Mrs H Brady (Vice-Chairman), Mrs T Cochrane, Ms Y Knight, Mrs M Sartin (Chairman of the Council), Mrs P Smith and P Spencer
<b>Other members present:</b>	G Waller
<b>Apologies for Absence:</b>	R Butler, G Chambers, L Girling and S Murray
<b>Officers Present</b>	J Gilbert (Director of Environment and Street Scene), K Durrani (Assistant Director (Technical)), J Nolan (Assistant Director (Environment & Neighbourhoods)), C Wiggins (Safer Communities Manager) and A Hendry (Democratic Services Officer)

**25. SUBSTITUTE MEMBERS (COUNCIL MINUTE 39 - 23.7.02)**

The Panel noted there were no substitute members.

**26. DECLARATIONS OF INTEREST**

No declarations of interest were made.

**27. NOTES OF THE LAST MEETING**

The notes of the 7 January 2014 meeting were agreed as a correct record.

**28. DEPARTMENT OF TRANSPORT CONSULTATION ON LOCAL AUTHORITY PARKING**

The Department of Transport had issued a consultation document on Local Authority Parking. The deadline for response was 14 February 2014. The consultation was based around the premises that local authorities should adopt local parking strategies which compliment and enhance the attractiveness of high streets and town centres.

The consultation used the term "local authority" as a generic one, when in reality, unless agency arrangements are in place, responsibility for parking on the highway rests with the Highway Authority, in this area, Essex County. However, having withdrawn local agencies, on-street responsibility now rests with North and South Essex Parking Partnerships. In respect of off-street parking however, districts do have direct responsibility, even if discharged through a third party such as a contractor or NEPP.

The consultation sought responses to ten main questions. The Joint Committee of the North Essex Parking Partnership (NEPP) approved responses to the consultation

at its Committee meeting on 8 January 2014. Members were asked if they wished to consider any additional comments to the NEPP response.

The meeting went through each of the ten questions in turn, considering if any extra comments were needed.

**Question 1** - *Do you consider local authority parking enforcement is being applied fairly and reasonably in your area?* Members agreed with the NEPP answer.

**Question 2** – *The Government intends to abolish the use of CCTV cameras for parking enforcement. Do you have any views or comments on this proposal?* Members agreed with the NEPP answer but wanted to add that it would be a good idea to reference the large rural spread of our district and point out the (isolated) pressure points within the district (the spread of schools) that would need some sort of mobile enforcement.

**Question 3** – *Do you think the traffic adjudicators should have wider powers to allow appeals?* Members agreed with the NEPP and EFDC's answer.

**Question 4** – *Do you agree that guidance should be updated to make clear in what circumstances adjudicators may award costs? If so, what should those circumstances be?* Members agreed with the NEPP answer.

**Question 5** – *Do you think motorist who lose an appeal at parking tribunal should be offered a 25% discount for prompt payment?* Members agreed NEPP and EFDC's answer but wanted to expand our comment to indicate that we understood that there would be a cost to this.

**Question 6** – *Do you think that local residents and firms should be able to require councils to review yellow lines, parking provision, charges etc. in their area? If so what should the reviews cover and what should be the threshold for triggering a review?* Members agreed with the NEPP and EFDC's answer.

**Question 7** – *Do you think that authorities should be required by regulation to allow a grace period at the end of paid for parking?* Members agreed with the NEPP and EFDC's answer.

**Question 8** – *Do you think that a grace period should be offered more widely, for example for overstaying in free bays, at the start of pay and display parking and paid for parking bays and in areas where there are parking restrictions or single yellow lines?* Members agreed with the NEPP and EFDC's answer.

**Question 9** – *If allowed, how long do you think the grace period should be?* Members agreed with the NEPP and EFDC's answer.

**Question 10** – *Do you think the Government should be considering any further measures to tackle genuinely antisocial parking or driving? If so, what?* Members agreed NEPP comments but wanted to add the following as our comments:

- On NEPP point 'a', we should add that a person may have the right to use a bridleway (e.g. as an access point) Bona-fide use had some merit. Did not like the use of the words "sensible and responsible" as this was not easy to enforce.

- Also on NEPP point 'c' it should be noted that pavements get badly damaged as well.
- On NEPP points 'i' and 'g' we did not know how this would work in practice – they may produce more appeals. Also, 'i' would need careful legislation drawn up to cover this.

**29. COMMUNITY SAFETY PARTNERSHIP ASSESSMENT 2014-15 AND THE EFDC COMMUNITY SAFETY PARTNERSHIP PLAN.**

The Panel were told that the two Community Safety Partnership (CSP) reports had come to this meeting too soon as they still had to be considered by the Community Safety Partnership Strategic Panel. The first document, the CSP Assessment 2014-15 was purely a factual document looking at the statistics over a period of time. However, the second report the 'Epping Forest District Council Community Safety Partnership Plan' should firstly be considered by the Strategic Panel and then brought to this Panel for any further comments at their April meeting. Officers apologised for the pre-empting of this schedule, but noted that members had now been given plenty of time to study the documents in depth.

The meeting noted that the Community Safety Partnership membership consisted of the Police, the new privatised Probation Service (still to come), Fire and Rescue Service, Corporation of London, Lea Valley Regional Park Association, the Local Strategic Partnership and the Clinical Commissioning Group. Although it was noted that a lot of the partners did not actually turn up to the meetings, officers did write and try and 'nudge' them into attending; but it was acknowledged that they did have a lot of other partnership meetings they had to attend.

**30. TERMS OF REFERENCE AND WORK PROGRAMME**

The Panel noted their terms of reference and work programme. They noted that for item 16 of the work programme on 'highway accident statistics'; officers would try and get the county's Casualty Reduction Officer to address the meeting in the new year.

**31. REPORTS TO BE MADE TO THE NEXT MEETING OF THE OVERVIEW AND SCRUTINY COMMITTEE**

The Panel noted that they should report back to the O&S Committee that they had commented on the DfT Consultation on Local Authority Parking.

Councillor Smith asked that officers look into the ECC recycling survey that had gone up online. Officers noted that it was about the closure of what were termed Civic Amenity Sites and that part of this would be picked up through the new waste contracts currently being negotiated. However, they would ask the Portfolio Holder how he would like to deal with this.

This page is intentionally left blank

## TERMS OF REFERENCE - STANDING PANEL

**Title: Safer, Cleaner, Greener**

**Status: Standing Panel**

**Terms of Reference:**

1. To approve and keep under review the "Safer, Cleaner, Greener" initiative development programme.

*(Note: this development programme will encompass the three main issues and will therefore include matters such as:*

- (i) environmental enforcement activity*
- (ii) safer communities activities*
- (iii) waste management activities (in addition to WMPB information))*

2. To keep under review the activity and decisions of the Waste Partnership Member Board and the Inter Authority Member Working Group.
3. To receive reports from the Waste Management Partnership Board in respect of the operation of and performance of the waste management contract
4. To monitor and keep under review the 'Climate Local Agreement' and the Council's progress towards the preparation and adoption of a sustainability policy and to receive progress reports on the Council's Climate Change Strategy from the Green Working Group
5. To receive and review the reports of the Bobbingworth Nature Reserve (former Landfill site) Liaison Group.
6. To act as the Council's Crime and Disorder Scrutiny Committee and to keep under review the activities of the Epping Forest Safer Communities Partnership as a whole or any of the individual partners which make up the partnership and:
  - That one meeting a year be dedicated as Community Safety Committee meetings.
7. To monitor and review the new Local Highways Panel.
8. To receive the minutes of the North Essex Parking Partnership (NEPP) for the purposes of monitoring the work and progress of the partnership.
9. To monitor and review the minutes of the Police and Crime Panel.

**Chairman: Cllr. Lea**

This page is intentionally left blank



**Safer, Cleaner, Greener Standing Panel (Chairman – Cllr Lea)**  
**Work Programme 2013/14**

Item	Report Deadline / Priority	Progress / Comments	Programme of Future Meetings
(1) Enforcement activity	October 2013	Six monthly report to Panel	<del>09 July 2013</del> (Cancelled);
(2) Enforcement activity	April 2014	Six monthly report to Panel	<del>28 October 2013;</del>
(3) CCTV action plan review	July 2013	Six monthly report to Panel – last went to January 2013 meeting – <b>went to October meeting</b>	<del>07 January 2014;</del>
(4) CCTV action plan review	January 2014	As October plan that went to the October meeting	<del>11 February 2014;</del>
(5) CSP scrutiny review meetings	April 2014	Report last went to April 2013 meeting	15 April 2014
(6) West Essex Local Policing Area Strategic Assessment	April 2014	Report last went to April 2013 meeting	Crime & Disorder Scrutiny meeting –
(7) Receive notes of Waste IAA Member meetings	As appropriate	Notes reported to Panel at first available meeting following receipt – <b>January '14 meeting received notes of 24 October 2013 meeting</b>	July 2013 - cancelled
(8) Receive notes of Waste Management Partnership Board	As appropriate	Notes reported to Panel at first available meeting following receipt – <b>October meeting received notes of 15 July 2013 meeting</b>	
(9) Progress against Climate Local Agreement	October 2013	Six monthly report to Panel – the Council has not yet signed up to the Climate Local Agreement and this still remains to be decided. Instead, Sarah Creitzman and Kassandra Polyzoides have worked on a charter of commitments that were more specific to EFDC. Sarah to carry this forward to Portfolio Holder and circulate amongst GCWP members for comment.	

**Safer, Cleaner, Greener Standing Panel (Chairman – Cllr Lea)**  
**Work Programme 2013/14**

Item	Report Deadline / Priority	Progress / Comments	Programme of Future Meetings
(10) Progress against carbon reduction strategy	October 2013	Six monthly report to Panel – Once a charter of EFDC environmental commitments has been established and agreed, a strategy will need to be written based around achieving the aims that are signed up to.	
(11) Receive notes of Bobbingworth Nature Reserve liaison group	As appropriate	Notes reported to Panel at first available meeting following receipt – <b>October meeting received notes of the 27 March 2013 meeting</b>	
(12) Recycling in flats and multi-occ dwellings	October 2013	<b>A verbal report was given at the Oct 13 meeting.</b>	
(13) Monitor Local Highways Panel	As appropriate	Once established to keep a watching brief on the effectiveness of the new Local Highways Panel – <b>January '14 meeting received minutes from the November 2013 meeting.</b>	
(14) Review notes of SLM contract monitoring board	As Appropriate	Notes reported to Panel at first available meeting following receipt – <b>January '14 meeting received minutes of the November 2013 meeting</b>	
(15) Receive notes of North Essex Parking Partnership (NEPP) minutes	As appropriate	Notes reported to Panel at first available meeting following receipt – <b>January '14 meeting received notes from the August 13 meetings</b>	
(16) Highway accident statistics	Info will be given to the Panel when available.	Report went to April 2013 meeting. A further detailed report and presentation from county officers was called for.	
(17) To monitor the minutes of the Police and Crime Panel	As appropriate		



**Epping Forest District  
Community Safety Partnership  
Strategic Intelligence Assessment 2014-15**

**Contents**

**Section I: Introduction and Summary..... 1**

**1. Introduction..... 1**

**2. All Crime..... 2**

    2.2 Crime in Rural Areas..... 4

    2.3 Alcohol Related Crime..... 5

**Section II: Priority Crime in Epping Forest ..... 6**

**3. Dwelling Burglary ..... 6**

    3.1 Overview..... 6

    3.2 Location ..... 7

    3.3 Victims ..... 8

    3.4 Offenders..... 9

**3.5 Summary ..... 10**

**4. Theft From a Motor Vehicle..... 11**

**4.1 Overview..... 11**

    4.2 Location ..... 12

    4.3 Victims ..... 13

    4.4 Offenders..... 14

**4.5 Summary ..... 15**

**5. Assault Serious & Other..... 16**

    5.1 Overview..... 16

    5.3 Victims ..... 19

    5.4 Offenders..... 20

**5.5 Summary ..... 20**

**6. Domestic Violence..... 21**

    6.1 Overview..... 21

    6.2 Location ..... 21

    6.3 Victims ..... 22

    6.4 Offender..... 23

**6.5 Summary ..... 23**

**7. Anti-social Behaviour (ASB) ..... 24**

    7.1 Overview..... 24

    7.2 Location ..... 25

    7.3 ASB linked to Night Time Economy (NTE)..... 26

**7.4 Summary ..... 27**

**Section III: Emerging crime in Epping Forest District..... 28**  
**8. Emerging trends ..... 28**  
    8.1 Courier Crime..... 28  
    8.3 Victims ..... 29  
**Section IV: Offenders in Epping Forest District ..... 30**  
Youth Offending..... 30  
Reoffending ..... 31  
**Section V: Conclusions..... 32**  
Recommendations and next steps..... 32  
**Appendix A: Priority Selection Matrix ..... 34**

**Contributors & Acknowledgements**

Josie Harding - West LPA Partnership Analyst

Paul Gardener – Community Safety Officer, Epping Forest District Council

Valerie Loftis – Media & Public Relations, Epping Forest District Council

Ted Hampson – Kent & Essex Police Principle Analyst

## Section I: Introduction and Summary

### 1. Introduction

The Epping Forest District Safer Communities Partnership Strategic Assessment (SA) 2014-15 is a document that has tried to interpret statistics and provide a signpost for potential areas of prevention, enforcement or further intelligence gathering. This year where intelligence gaps have been identified there are some suggested questions at the conclusion of each section that could be investigated further in a problem profile. There is also a useful summary of key findings at the end of each section bringing together the significant findings. Where data is unavailable this too has been highlighted. The structure has incorporated the problem analysis triangle and tries to highlight some significant facts around:-

- Offenders who commit crime in the district
- Likely victims of crime
- Places where crimes occur

The findings of this strategic assessment should help direct partnership resources into areas where they can achieve the most cost effective and productive results. This is particularly relevant at a time of shrinking resources and budgets.

The future remains very challenging for Community Safety Partnerships (CSPs). All public services are dealing with significant changes to working practices to address shrinking budgets in a time of economic and social need. This strategic assessment sets out to identify where decreasing resources can be used to greatest effect.

A Local Priority Selection Matrix (see Appendix A) was used to formulate the district's priorities based on crime type, volume, seriousness, previous performance, public concern and repeat incidents.

The Epping Forest District Community Safety Partnership Local Priorities for 2014-15 are:

1. Domestic Abuse
2. Theft from Motor Vehicle (TFMV)
3. Anti-social Behaviour
4. Burglary Dwelling (including attempts)
5. Assaults serious injury and other

A clear theme throughout the CSP's Partnership Plan should be towards delivering sustainable improvements in community safety. This will require the actions to tackle the priorities above to be based around:-

- Identifying those agencies and resources that are best placed to respond and deliver improvements to community safety.
- Providing a balanced consideration between enforcement, prevention, risk reduction and reassurance.
- Specifically identify how responses can better control offenders, improve guardianship, and improve the management of places.

There is also an emerging trend of courier crime, which targets the elderly and should be considered in the Partnership Plan when delivering responses. This SA will be updated in a refresh in April 2014 to ensure strategic direction is maintained.

## 2. All Crime

### 2.1 Overview

Data in this report spans over a 12 month period, the dates of which are 1<sup>st</sup> October 2012-30<sup>th</sup> September 2013 and will be referred to as 'this year'. Comparisons with 'last year' refer to the same dates of the previous year, 1<sup>st</sup> October 2011-30<sup>th</sup> September 2012.

There were 7264 criminal offences this year in Epping Forest. This is a reduction of 5% since October 2010, or 394 fewer offences.

On a monthly basis Epping Forest performs within the Essex average.

Epping Forest district ranks 8<sup>th</sup> of the 14 local authority areas of Essex for Crime per 1,000 residents, where 14<sup>th</sup> has the highest volume of crime.

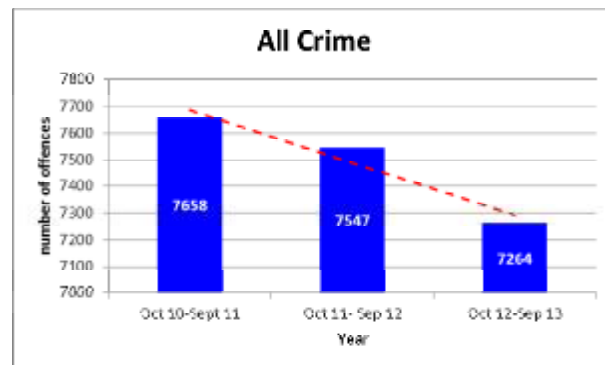


Figure 1: All Crime figures over the last 3 years in accordance with the strategic date frame above.

### Epping Forest crime figure comparison

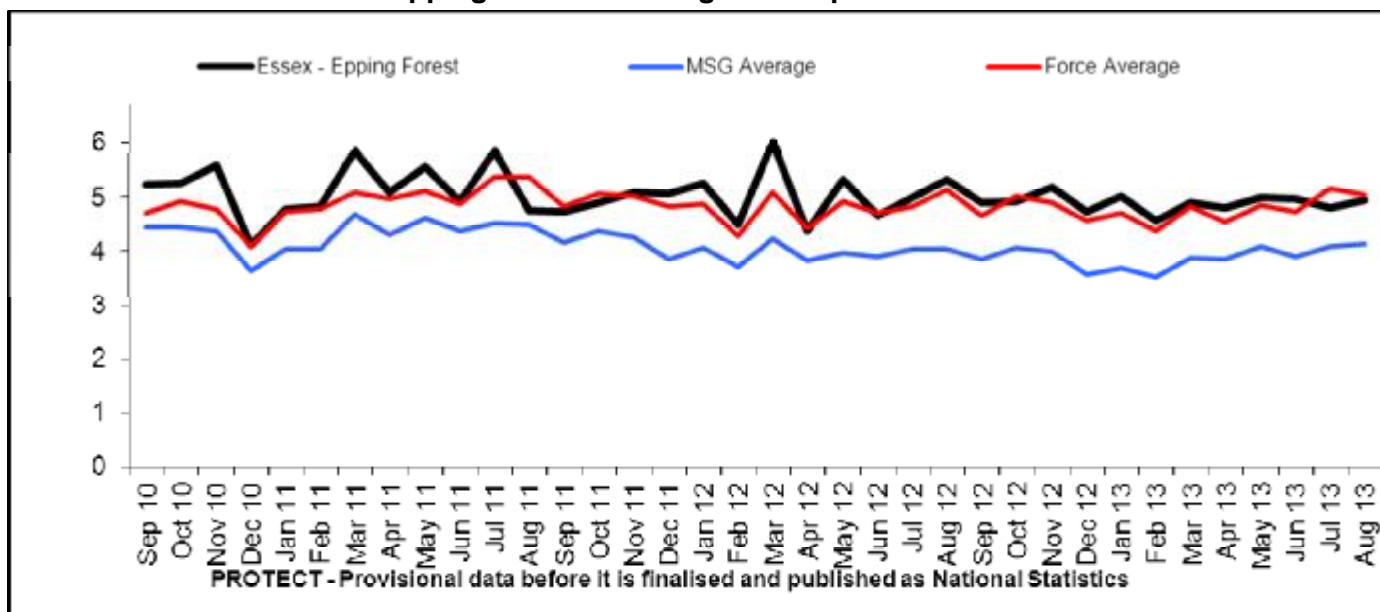


Figure 2: Epping Forest crime figures compared to Essex Average and the Most Similar Group (MSG) per 1,000 residents (For a list of Epping's MSG please see appendix).

#### Previous Priorities

Epping Forest's previous priorities were Anti-social behaviour (ASB), Domestic Abuse, Dwelling Burglary and Theft from a motor vehicle. Since the last strategic assessment;

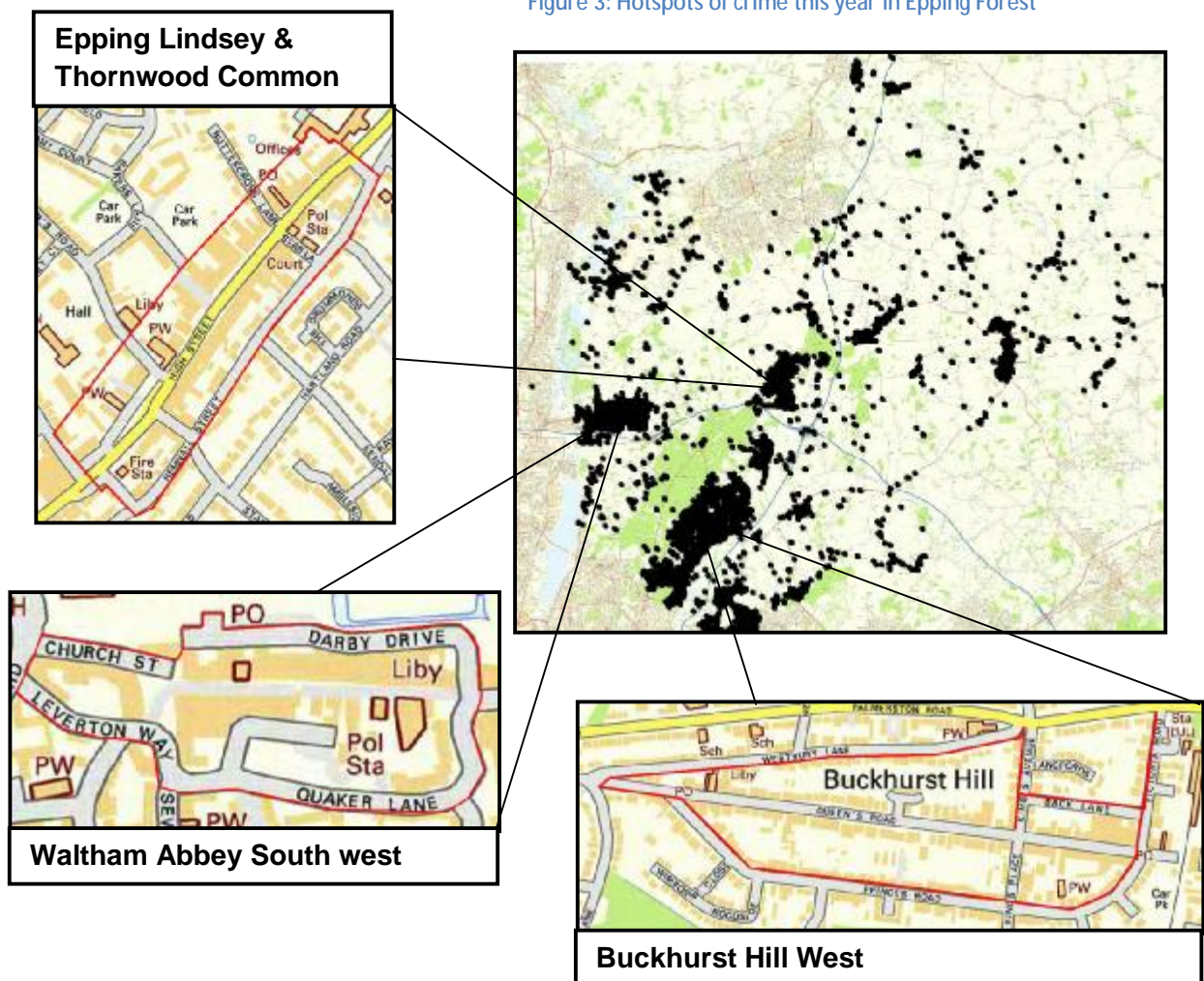
- ASB has seen a 6% reduction in incidents, however because ASB is a public concern efforts to reduce anti-social behaviour remains a priority.
- Domestic abuse has seen a 5% reduction. Despite this seemingly positive result, Epping Forest encourages victims of domestic abuse to report incidents so victims can be supported and the number of repeat victims reduced. Therefore it remains a

## RESTRICTED

priority to continue encouraging victims to come forward and to reduce the number of repeat incidents.

- Theft from a motor vehicle has seen small reductions in recent months; however a year on year comparison shows no change. Therefore This remains a priority until reductions in theft from vehicles stabilises.
- Dwelling Burglary has seen a 17% reduction. Despite significant success in reducing burglary, this has remained a priority to continue reductions and because burglary is an increasing public concern, with 12% more residents this year concerned dwelling burglary is a problem.
- Assault serious and other has become a priority this year because the number of offences in Epping Forest is higher than the Essex average and there has been an increase in the rate of repeat victims.

### All Crime Hotspots



Epping Lindsey and Thornwood common has seen a 15% increase in crime, Buckhurst Hill West has seen an 18% increase and Waltham Abbey South West has seen a 6% decrease in crime. Other hotspots include Loughton St. Mary's and Loughton Broadway.



2.2 Crime in Rural Areas

Accordingly to the 2011 census, 87% of Epping Forest is 'green space' land. Therefore the majority of Epping Forest is considered rural. Rural crime has been defined in this instance as crime occurring in rural areas of the district. This has been established by removing urban areas of the district from the analysis. Urban areas are shown in red on the map below.

22% of crime and ASB in the district occurs in rural areas. The population in the rural area of the district is approximately 21,577. The rate of crime per 1,000 residents is high due to the small number of residents. There were 1406 criminal offences, equating to approximately 65 offences per 1,000 residents and 586 reports of ASB, equating to approximately 27 incidents per 1,000 residents.

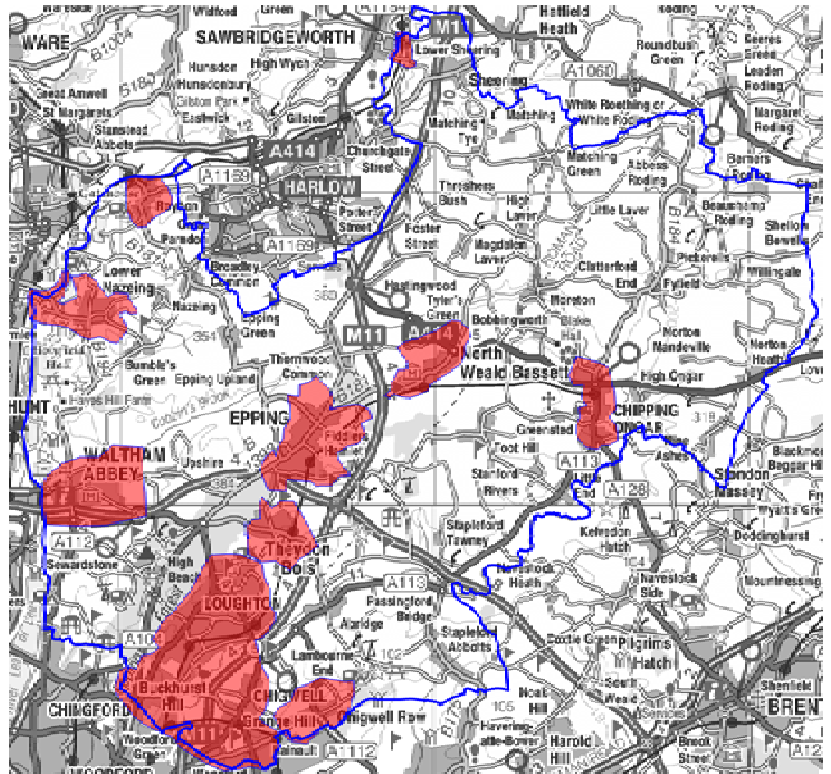


Figure 4: rural areas of Epping Forest District

Rural Wards	Population	Crime	Rate per 1,000 residents
Broadley Common, Epping Upland and Nazeing	1970	108	54.82
Chigwell Row	2207	98	44.40
Hastingwood, Matching and Sheering Village	2138	205	95.88
High Ongar, Willingale and The Rodings	2237	105	46.94
Lambourne	2013	164	81.47
Moreton and Fyfield	2122	98	46.18
Passingford	2256	144	63.83
Roydon	2193	86	39.22
Shelley	2205	125	56.69
Waltham Abbey High Beach	2236	273	122.09
Total	21577	1406	65.16

Table 1: Crime rate in rural wards of Epping Forest

Nuisance vehicles are the highest reported ASB in rural areas. 19% of all nuisance vehicle reports in the district occur in rural areas.

Residents of rural areas are most commonly victims of theft.

1/4 of all theft in the district occurs in rural areas.

Offence	Total
Other Theft	234
Theft from a Vehicle	177
Burglary in a dwelling	134
Burglary in a building other than a dwelling	99
Assault with Injury	82

Table 2: Top 5 rural crimes in Epping Forest

Property	Total
Fuel	113
Tools	94
Cash	36
Index Plate	27
Mobile phone	17
Metal	16
Copper cable/Pipe	13
Farming Equipment	12
Oil	5
Batteries	5

The most popular property stolen in rural crime is shown in the table to the left. Fuel is stolen, most commonly, via making off without payment offences, however, some cases report fuel being siphoned from vehicles. Tools are also commonly stolen, usually from vehicles. The most commonly stolen tools were power tools stolen from vans.

Oil was also stolen on 5 occasions by forcing open oil drums. 2 drums were located on farming land and the rest were domestic heating oil stolen from outside properties.

On 4 occasions batteries were stolen from temporary traffic lights. An isolated incident saw battery theft from an electric fence.

Table 3: property stolen in rural crime

### 2.3 Alcohol Related Crime

#### Local Alcohol Profiles for England (LAPE)

According to the LAPE the majority of people in Epping Forest are low risk drinkers. This figure is a synthetic estimate of the percentage within the population. Low risk drinkers are defined as those consuming less than 22 units for males and 15 units for females. Increasing risk is defined as consumption between 22 and 50 units of alcohol per week for males and between 15 and 35 units for a female. High risk is defined as consumption of more than 50 units for males and 35 units for females.

A very small percentage of the population are high risk drinkers. Approximately 5,000-6,000 people in the district.

Figures of alcohol-related violent crimes are significantly lower in Epping Forest than the England average. Alcohol-specific hospital admission figures are lower in Epping Forest than the England average for females and under 18s and significantly lower for males.

Epping Forest has a significantly higher number of employees working in bars than the England average and the regional average. This means a large proportion of jobs in Epping Forest are in bars.

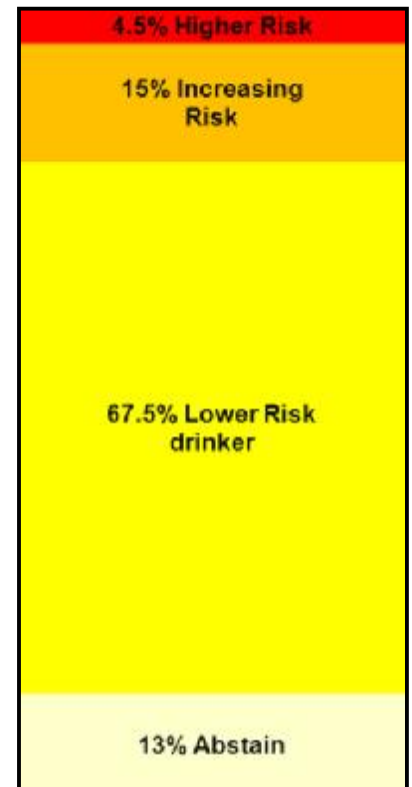


Figure 5: Drinkers in Epping Forest

## Section II: Priority Crime in Epping Forest

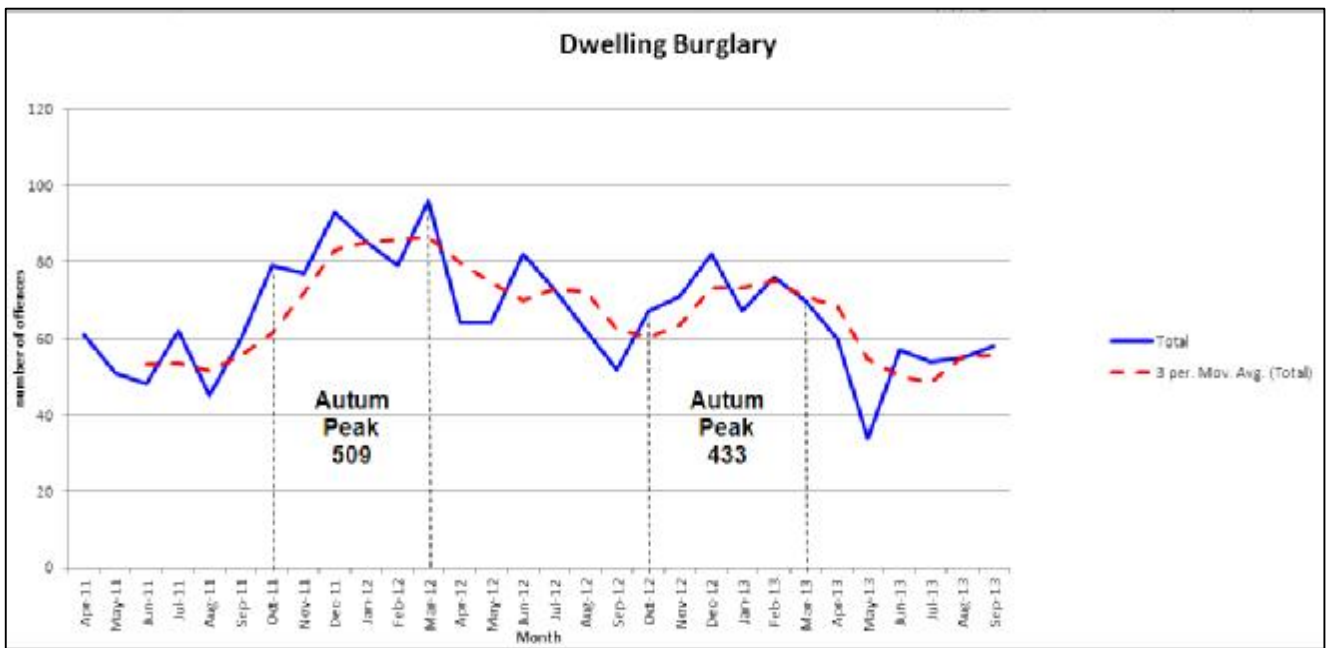
A local priority selection matrix was used to select the priority crime for the year 2014-2015 (see appendix). This matrix considers several factors such as the cost of crime, public concern, repeat victimisation, direction of travel and volume. The matrix has identified the following 5 crimes as a priority this year for Epping Forest;

### 3. Dwelling Burglary

#### 3.1 Overview

There were 751 dwelling burglaries this year. This is a 17% reduction on last year's figures, or 155 fewer offences. Dwelling burglary suffers an autumn peak between October and March when the evenings get darker and attract opportunist burglars. 58% of all burglary in Epping Forest occurs between October and March. The autumnal Burglary trend has, however, decreased by 15%, 76 less burglaries in this period compared to last year.

During the autumn/ winter period there were approximately 72 burglaries per month, whereas during the spring/summer period there were approximately 53 burglaries per month. Overall since last year there has been a decrease of approximately 13 burglaries per calendar month on average.



Dwelling Burglary	Oct 11- Sep 12	Oct 12- Sep 13	# change	% change
Attempted	156	133	-23	-15
Confirmed	741	614	-127	-17
Distraction	9	4	-5	-56

Figure 6: Dwelling Burglary by month in Epping Forest

The number of burglaries resulting in vehicle theft (millennium offences) is stable and occurs in small numbers. There has been a 13% reduction, 10 fewer offences this year of theft of vehicles from homes. Previously crime pattern analysis work has shown when vehicle theft via dwelling burglary increases, vehicle theft from garages decreases and vice versa.

**3.2 Location**

The main burglary hotspot is **Loughton Fairmead** with 6% of all domestic burglary this year. 74% of all burglary in this location occurred during the autumnal period. Other hotspots this year were Limes Avenue in **Grange Hill** and the roads surrounding Palmerston Road in **Buckhurst Hill West**. Like Loughton Fairmead, the majority of burglaries in these areas also occurred during the autumn/winter period.

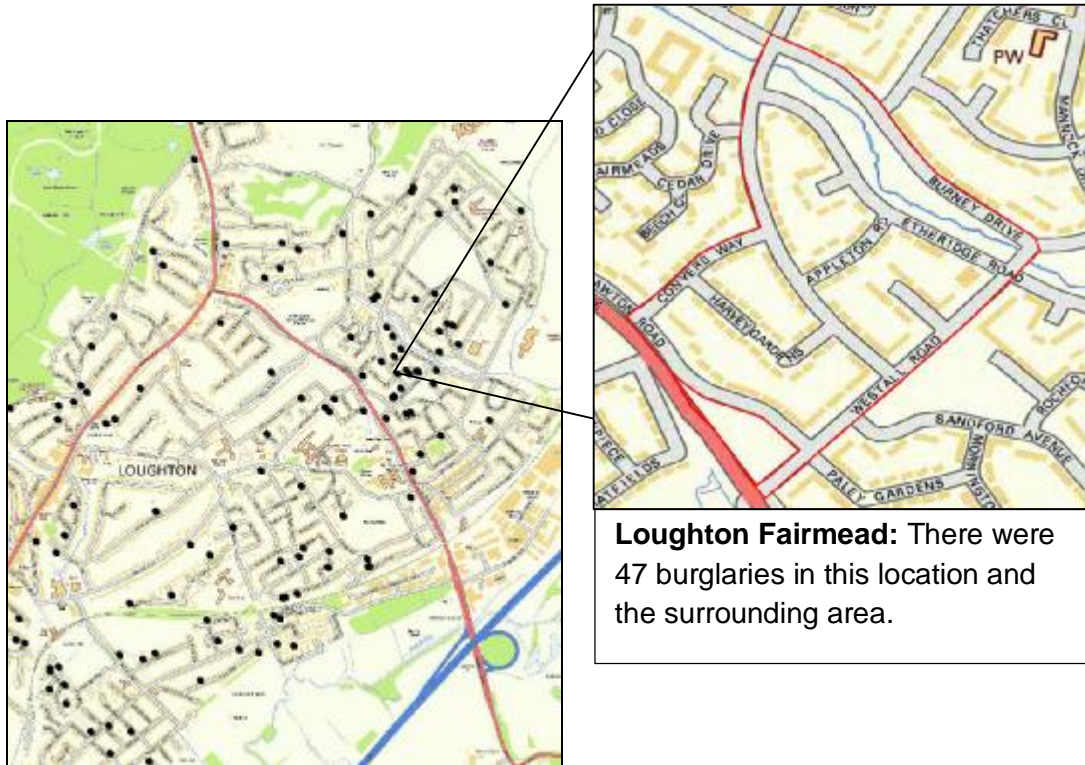


Figure 7: Dwelling burglary hotspot

The Table below identifies the number of burglaries according to season. **Theydon Bois**, despite experiencing burglaries in smaller numbers, experienced almost all burglaries during the autumnal period, as did **Loughton Roding**. This indicates the majority of burglaries in the district occur in 6 months of the year when the evenings are dark. Therefore by tackling burglaries between October and March, 58% of all burglary would be targeted.

Ward	Autumn/ Winter	Spring/Summer	Total
	Oct 12-Mar 13	Apr 13-Sep 13	
Loughton Fairmead	35	12	47
Buckhurst Hill West	27	19	46
Grange Hill	27	10	37
Loughton Alderton	23	14	37
Chigwell Village	17	20	37
Epping Lindsey & Thornwood Common	22	14	36
Buckhurst Hill	21	13	34
Loughton Roding	24	9	33
Theydon Bois	23	8	31
Loughton St Marys	20	10	30

Table 4: Top Ten wards for dwelling burglary



### 3.3 Victims

There were 767 victims of dwelling burglary this year in the district. There is often an even split across genders when it comes to dwelling burglary because burglary does not generally target victims specifically but rather properties. Therefore males and females are equally likely to fall victim to dwelling burglary.

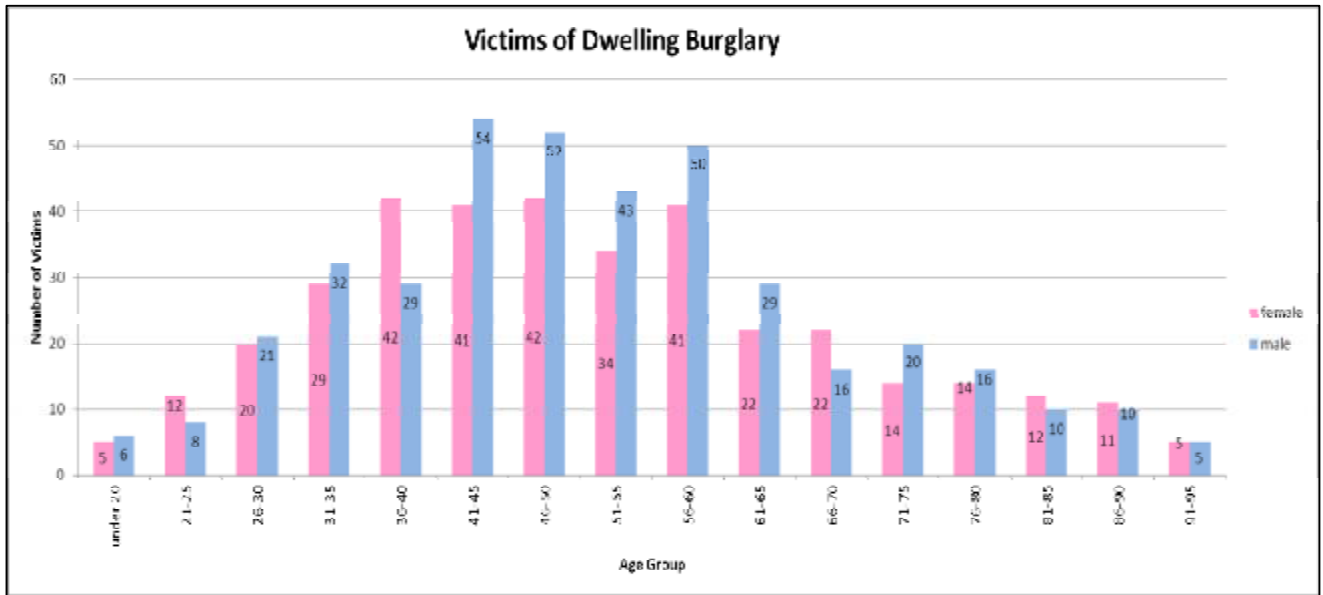


Figure 8: Victims of dwelling burglary

The majority of victims are between 41 and 50 years.

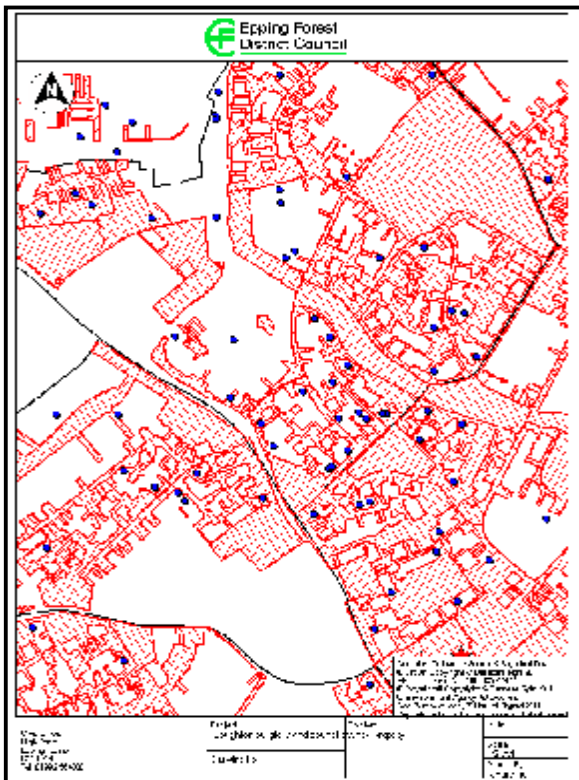


Figure 9: Loughton Burglary and council owned property

The map to the left shows dwelling burglary in the main hotspot, Loughton Fairmead, with council owned property marked in red. It is clear from the map that the majority of burglaries are in areas densely populated with council owned property. However the actual burglaries themselves tend to target privately owned properties. This correlation is seen throughout the entire district.

#### Vulnerable Property

The most commonly stolen property was jewellery, specifically watches and rings. This is closely followed by cash and computer equipment such as laptops and tablets.

The majority of burglaries reported messy searches, entry often from the rear or side of the property. Semi-detached properties and end terrace houses on corners with pathways between properties provides easy access for burglars.

## RESTRICTED

There were 14 repeat victims of dwelling burglary in Epping Forest over the last 6 months (7%). Essex County has a 7% repeat rate for the financial year 2012/13. Of the 249 who received a partnership visit after the first offence, there were only 8 repeat victims.

This figure equates to a repeat rate of 3% which means if every victim had received a visit in the last 6 months there could have been a reduction of 8 repeat victims.

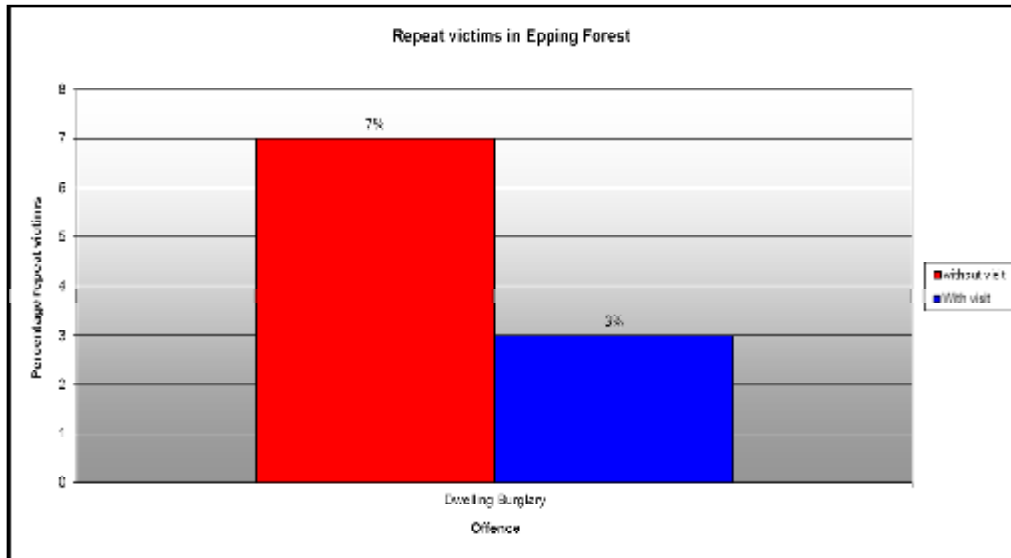


Figure 10: Evaluation of partnership visit for dwelling burglary

### 3.4 Offenders

The number of offenders is much smaller than the number of offences because a small number of offenders often commit a large number of offences. It is also important to note that only offenders known to the police can be included in this graph.

The majority of offenders are male between the ages of 16 and 20. Very few known offenders are female.

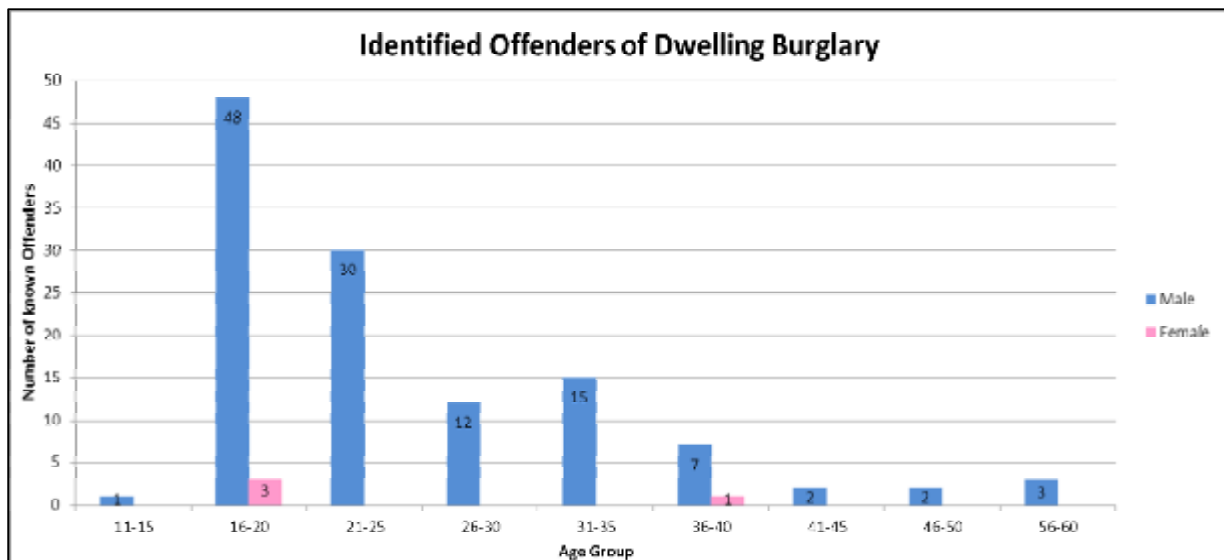


Figure 11: Offenders of dwelling burglary

## RESTRICTED

There is a 13% average detection rate in Epping Forest and Brentwood. This means only a small percentage of all offenders are actually known. Of this small percentage, the majority (42%) of burglars live in London close to the borders of Epping Forest. Areas such as Romford, Barking and Dagenham and Enfield. A further 32% live in surrounding districts of Essex, specifically the bordering areas of Harlow and Brentwood. Only 24% of burglars actually live in Epping Forest.



Figure 12: Location of offenders of dwelling burglary in Epping Forest

22 offenders were charged for burglary.

### 3.5 Summary

- **Burglary has reduced by 17% since last year**
- **58% of all burglaries occurred in the autumn/winter peak (however, this peak has reduced by 15% since last year)**
- **Loughton Fairmead and Buckhurst hill west saw the majority of burglary. Almost all burglaries in Theydon Bois took place in the autumn/ winter peak.**
- **Offenders were usually male between 16 and 20 years, 42% of which are from London.**
- **Victims were between 41 and 50 years**
- **Partnership visits can reduce repeat victimisation by just over half.**

Intelligence gaps and problem profile questions;

1. Is it possible to identify repeat offenders and their locations?
2. Could predictive mapping predict future burglary locations?
3. Is it possible to identify escape routes for burglars, e.g. alley ways, footpaths, vehicles?
4. Can a map of repeat victim's identify near repeat burglaries?

## 4. Theft From a Motor Vehicle

### 4.1 Overview

There were 1072 vehicle crime offences this year. This is 1 less than last year, a 0% change. This figure equates to approximately 89 offences per calendar month.

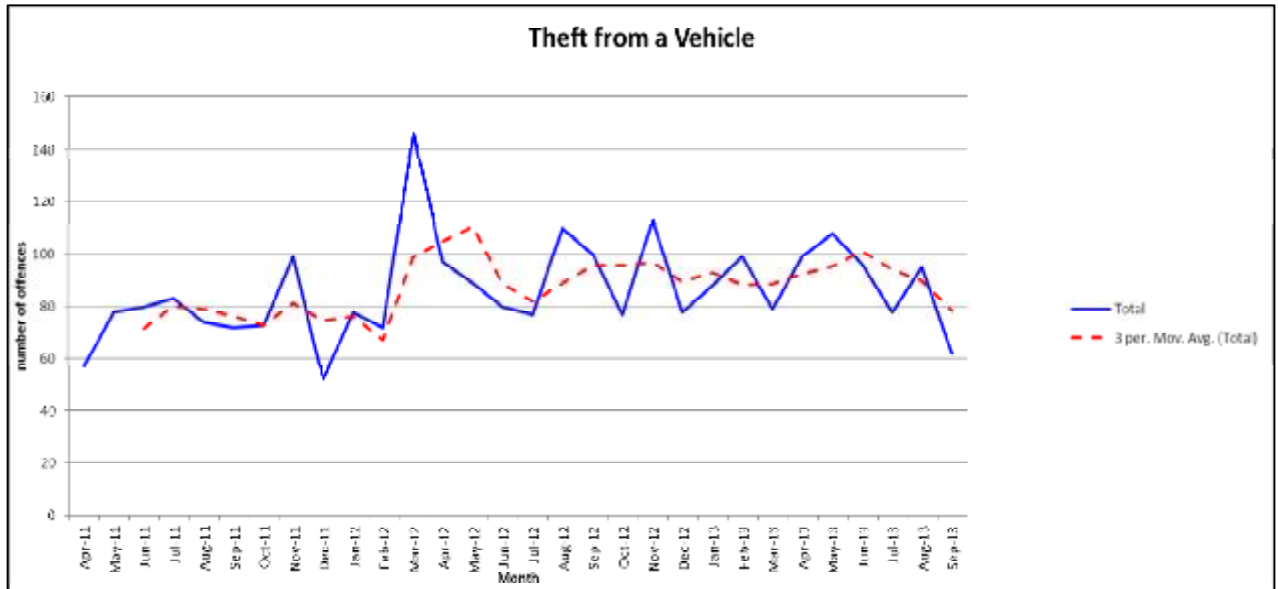


Figure 13: Theft from a vehicle by month in Epping Forest

Epping Forest see the most theft from vehicle offences per 1,000 residents than any other district in Essex and 4 more offences per 1,000 residents than the Essex average.

48% of theft targeted vehicles on the road, either near or outside properties. A further 27% of vehicles were in car parks.

Location Type	Total
Road	517
Car Park	287
Driveway	204
Rural	20
Building Site	18
Sports Grounds	15
Playground/ Park	5
School	3
Other	2
Garage	1

Table 5: Theft from vehicle location type



**4.2 Location**

9% of all theft from vehicles occurred in Honey Lane, Waltham Abbey.

Ward	Total
Waltham Abbey Honey Lane	100
Loughton St Marys	72
Chigwell Village	67
Buckhurst Hill West	59
Loughton Broadway	51
Waltham Abbey South West	46
Waltham Abbey Paternoster	44
Waltham Abbey High Beach	44
Loughton Forest	44
Grange Hill	43

Table 6: Theft from a vehicle hotspot wards

The majority of thefts in **Waltham Abbey** were on the roadside (45) or in car parks (30). Some locations contributing to the high number of thefts from vehicles in this area were; The Premier Inn, Sewardstone Road (15), The Marriot Hotel, Old Shire Lane (11) and the car park near Caneland court (9).

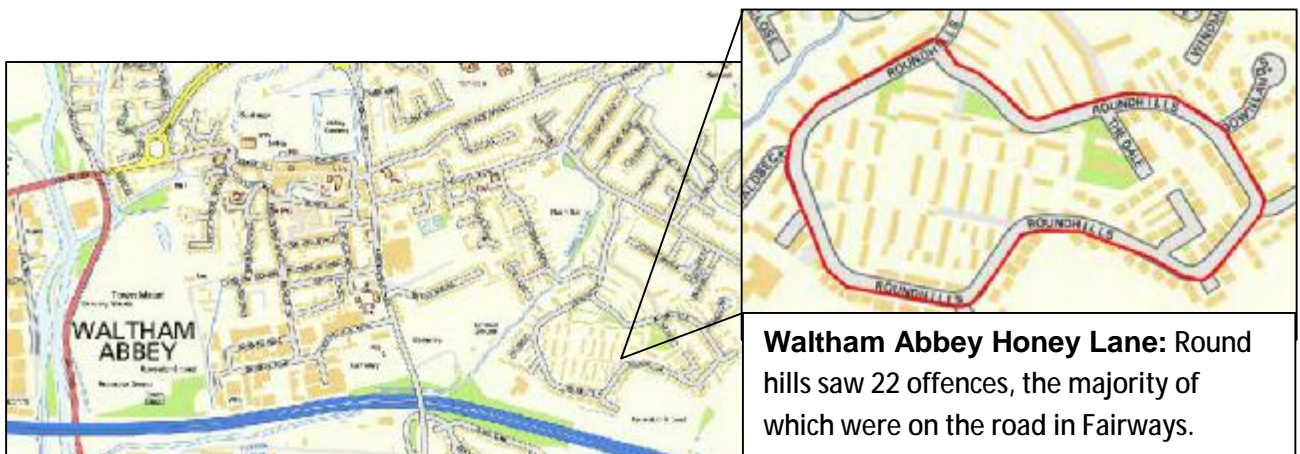


Figure 14: Theft from motor vehicle hotspot: Waltham Abbey Honey Lane

**Loughton St. Marys** is the second largest hotspot in the district. The majority of offences in this location were on the road (32) or a driveway (22).

Other specific locations in the district that have seen a high number of offences are; The Football academy Sports Pavilion, Langston Road, **Loughton Broadway** (11), Hoe lane, **Abridge** (11) and Premier Inn, **Buckhurst Hill** (7).

### 4.3 Victims

There were 1100 victims of theft from a vehicle, including witnesses. The number of victims is usually larger than the number of offences because there is, on occasion, more than one victim to one offence.

Please note the graph below is representative of all victims for which age and gender have both been specified. Some victims have been excluded due to a lack of this information.

69% of all victims were male; the peak age group of a male victim is 41-45 years whereas the peak age group for a female victim is 31-35 years.

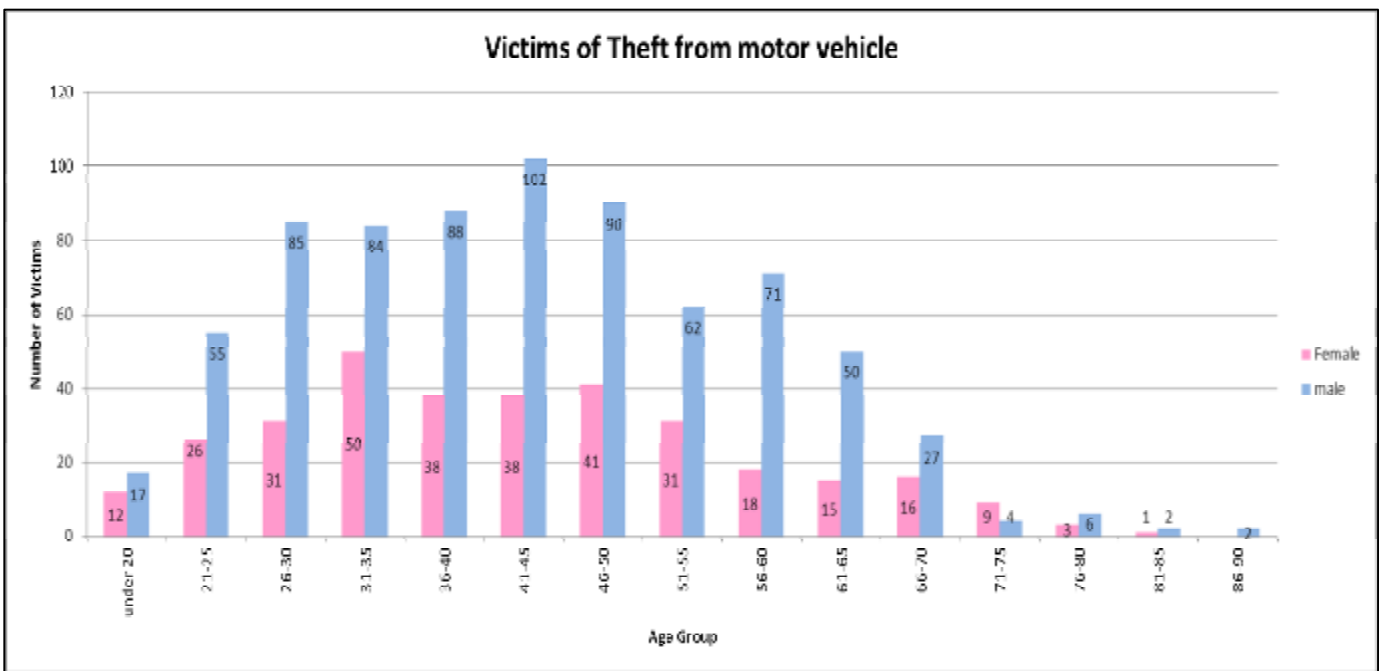


Figure 15: Victims of Theft from a motor vehicle

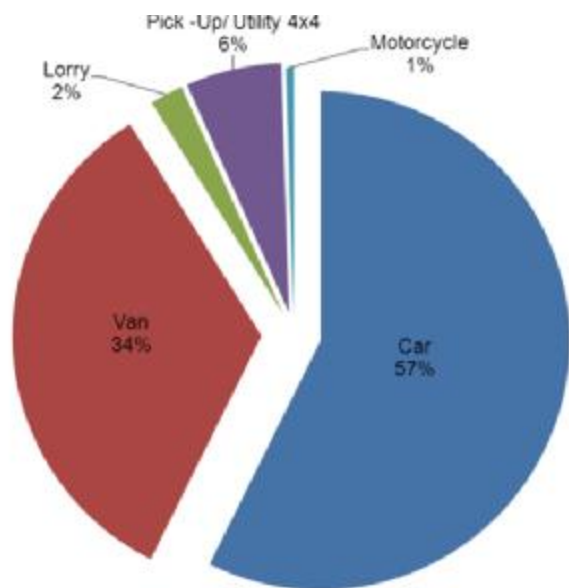


Figure 16: vehicle types affected by theft from a vehicle

The majority of types of vehicles subject to theft were cars, followed by vans. Ford, Vauxhall and Mercedes were the three most commonly affected vehicle makes.

- The majority of Ford vehicles were a mixture of vans such as Transit vans and cars such as Fiestas and Ford Focus.
- The majority of Vauxhalls were cars such as Astras and Corsas
- The majority of Mercedes were vans such as Sprinter and Vito vans.

### Vulnerable Property

Tools: 673 thefts reported tools stolen. The most commonly stolen items from vehicles were tools/equipment. Usually stolen from vans, the types of tools stolen are commonly building tools and equipment or high value power tools. Popular brand names of tools stolen are Makita, Bosch and Dewalt.

Index Plates: There were 194 index plate thefts this year; this is slowly decreasing since last year. Very few index plates are recovered which means it is unclear where stolen index plates go and for what purpose. It is likely they are used to commit further crime such as fuel theft; however there is little evidence to support this.

Cash: 137 thefts from vehicles reported stolen cash. In 6 cases cash was taken from the glove box, in a further 8 cases handbags or purses were in clear view either in the foot well, back seat or passenger seat. 4 offences reported handbags stolen from the boot. 6 vehicles that had cash stolen from the glove box were left insecure.

Catalytic Converters: 48 Catalytic converter thefts were reported, specifically targeting Mercedes Sprinter Vans and Ford Galaxys. This is likely to be because catalytic converters are easy to access in these particular vehicles.

### 4.4 Offenders

The number of offenders is much smaller than the number of offences because a small number of offenders often commit a large number of offences. It is also important to note that only offenders known to the police can be included in this graph.

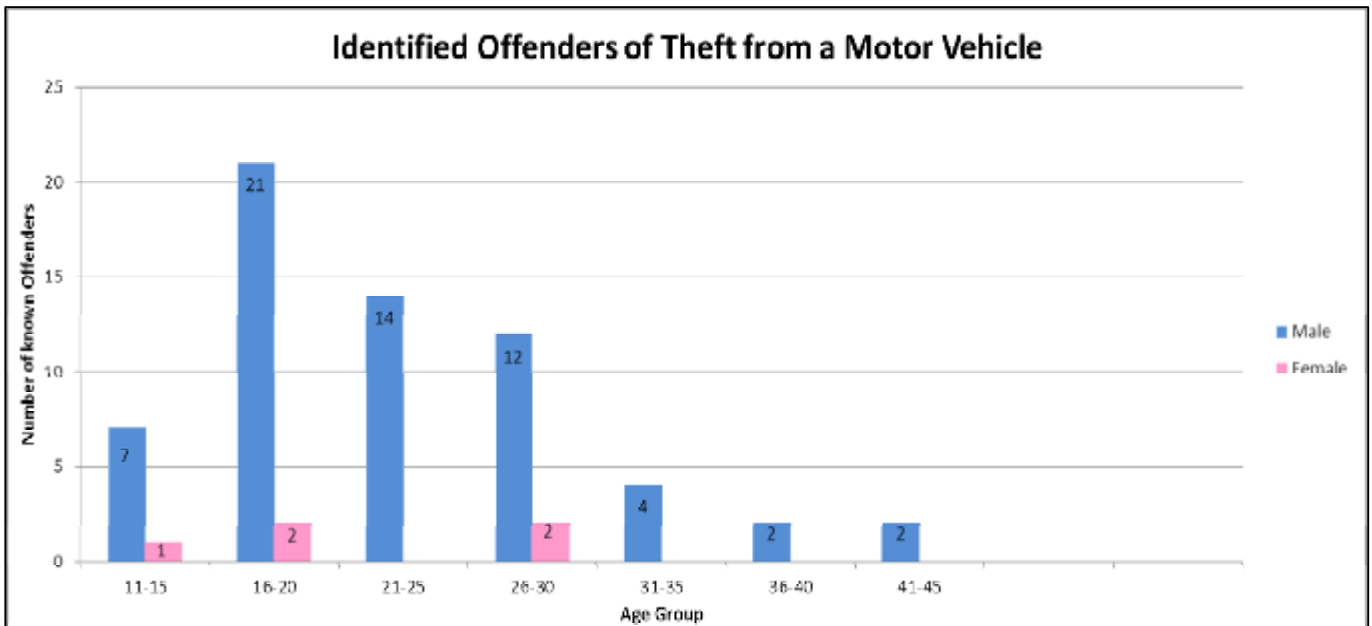


Figure 17: Offenders of theft from a vehicle

## RESTRICTED

The majority of identified offenders are from either London (such as Ilford and Dagenham) or Epping Forest. Very few offenders have been identified as living in bordering districts of Essex.

24 Offenders were charged.

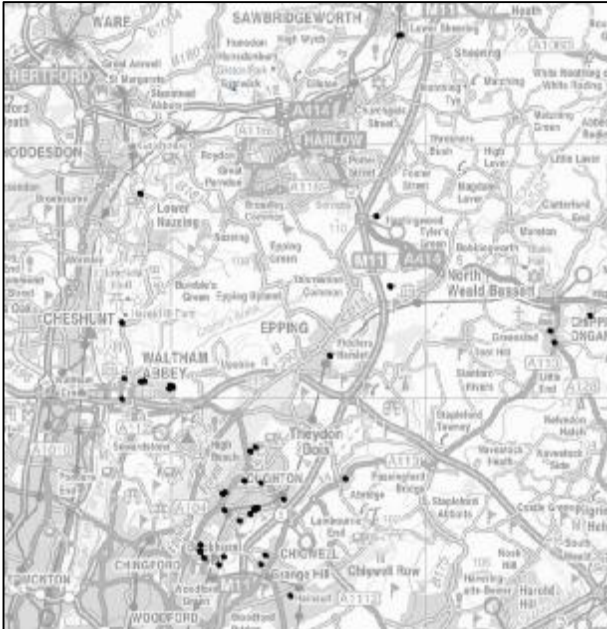


Figure 18: Offender locations for theft from a vehicle in Epping Forest

### 4.5 Summary

- Theft from motor vehicle has remained stable
- 48% occurred on the roadside, largely outside residential properties and 27% in car parks
- Waltham Abbey Honey Lane saw 9% of all thefts
- 69% of offenders were male 16-20 years
- 57% were cars and 34% vans
- The majority of items stolen were power tools
- The majority of offenders were from London, males between 16 and 20 years.

Intelligence gaps and problem profile questions;

1. Is it possible to quantify the amount of vehicles left insecure?
2. Is it possible to identify the amount of offenders who gained entry with the keys?
3. Could some analysis be carried out identifying whether items were on show or hidden?
4. Can a snapshot of specific MOs be provided to identify methods of entry?

## 5. Assault Serious & Other

### 5.1 Overview

There were 538 assaults, serious & other, this year in Epping Forest. This is a 1% reduction on last year's figures, or 6 fewer offences. There appear to be peaks in August and September, correlating with the weather. A higher number of reports of violent crime are seen in the hotter months of the year. This is likely to be because people spend more time socialising in the summer months than in the winter, which is also likely to correlate with alcohol consumption.

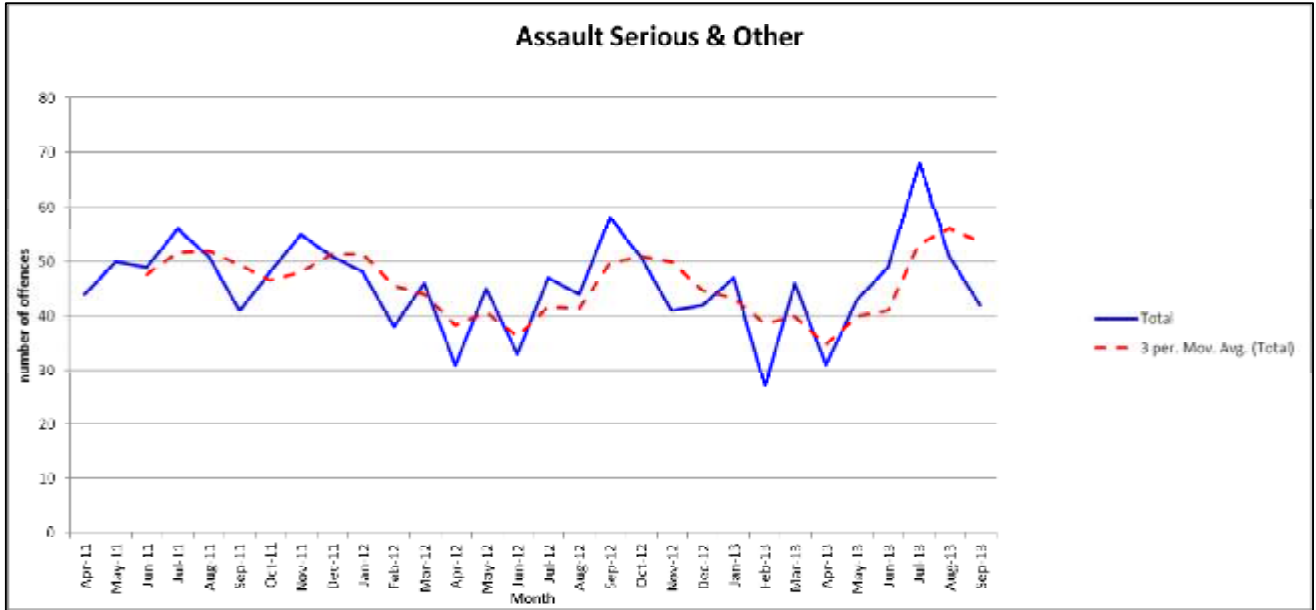


Figure 19: Assault serious & other by month in Epping Forest

Epping Forest sees approximately 4 serious assaults per 1,000 residents in the district and is ranked 7<sup>th</sup> of the 14 areas in Essex, where 14<sup>th</sup> sees the most offences per 1,000 residents. This is below the Essex average of 5 per 1,000 residents.

Of the 538 offences, 200 were linked to domestic abuse (37%) and 126 offences were linked to NTE (23%). The main hotspots for NTE assault are Loughton High Road and Epping High Street. Just over half of all assaults took place in residential areas, however not necessarily in a property.

Location Type	Total
Residential	248
Road	192
Licensed Premises e.g. Clubs, Bars, Restaurants	44
Shop	16
Car park	12
School	12
Petrol filling station	6
Other	8

Figure 20: Assault location types



5.2 Location

Ward	Total
Epping Lindsey & Thornwood Common	53
Waltham Abbey South West	51
Loughton Forest	47
Loughton St Marys	34
Loughton Broadway	33
Waltham Abbey Honey Lane	29
Grange Hill	23
Buckhurst Hill West	22
Loughton Alderton	20
Loughton Fairmead	18

Half of all offences took place in residential areas which means that there are no hotspot locations for these offences. They tend to be widespread throughout the district. Some trends regarding residential hotspots are shown in the map below.

Table 7: Top 10 wards for Assault serious and other

The hotspot locations in residential areas either potentially reflect the fallout from NTE or are in areas that suffer a large number of nuisance neighbours and other ASB complaints or domestic violence.

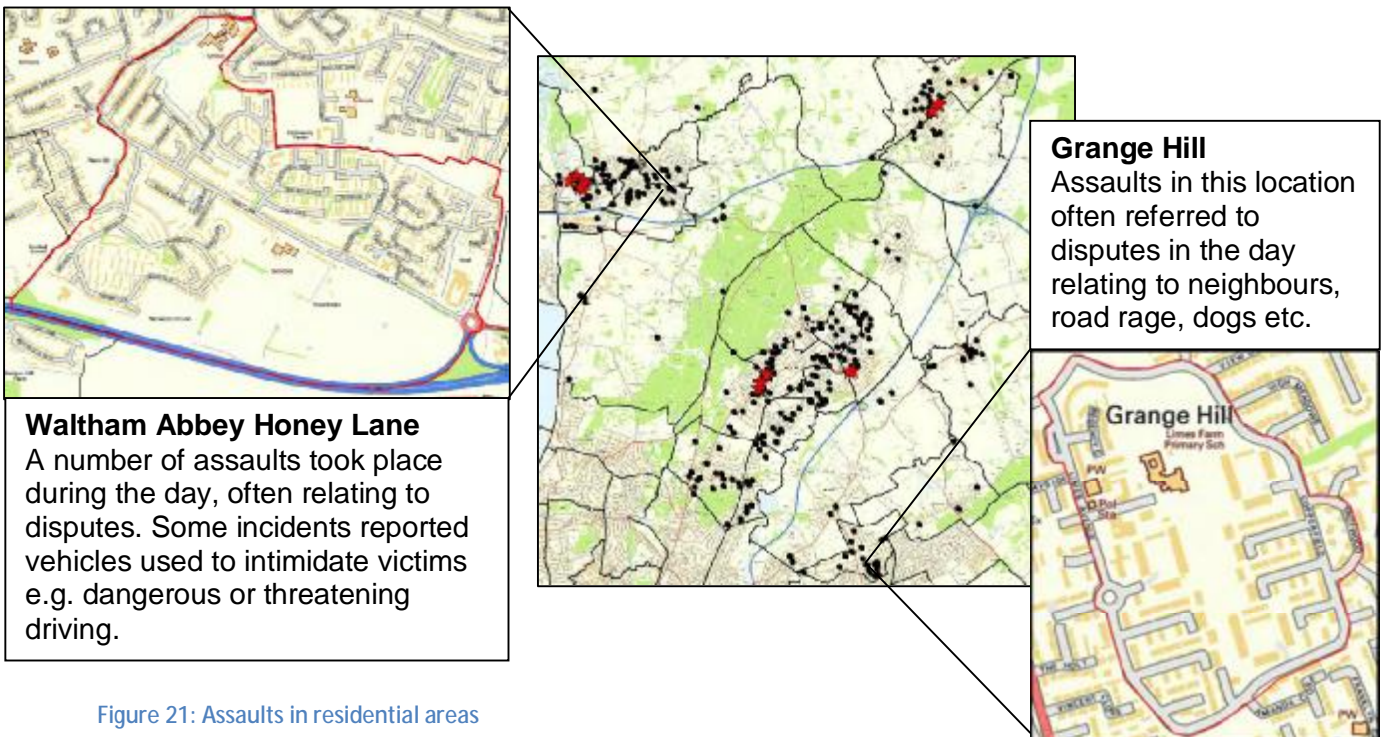


Figure 21: Assaults in residential areas

## RESTRICTED

The hotspots linked to NTE are shown below. These locations often see a number of assaults due to alcohol and other substance misuse associated with NTE. The map below shows the three main high streets linked to assault.

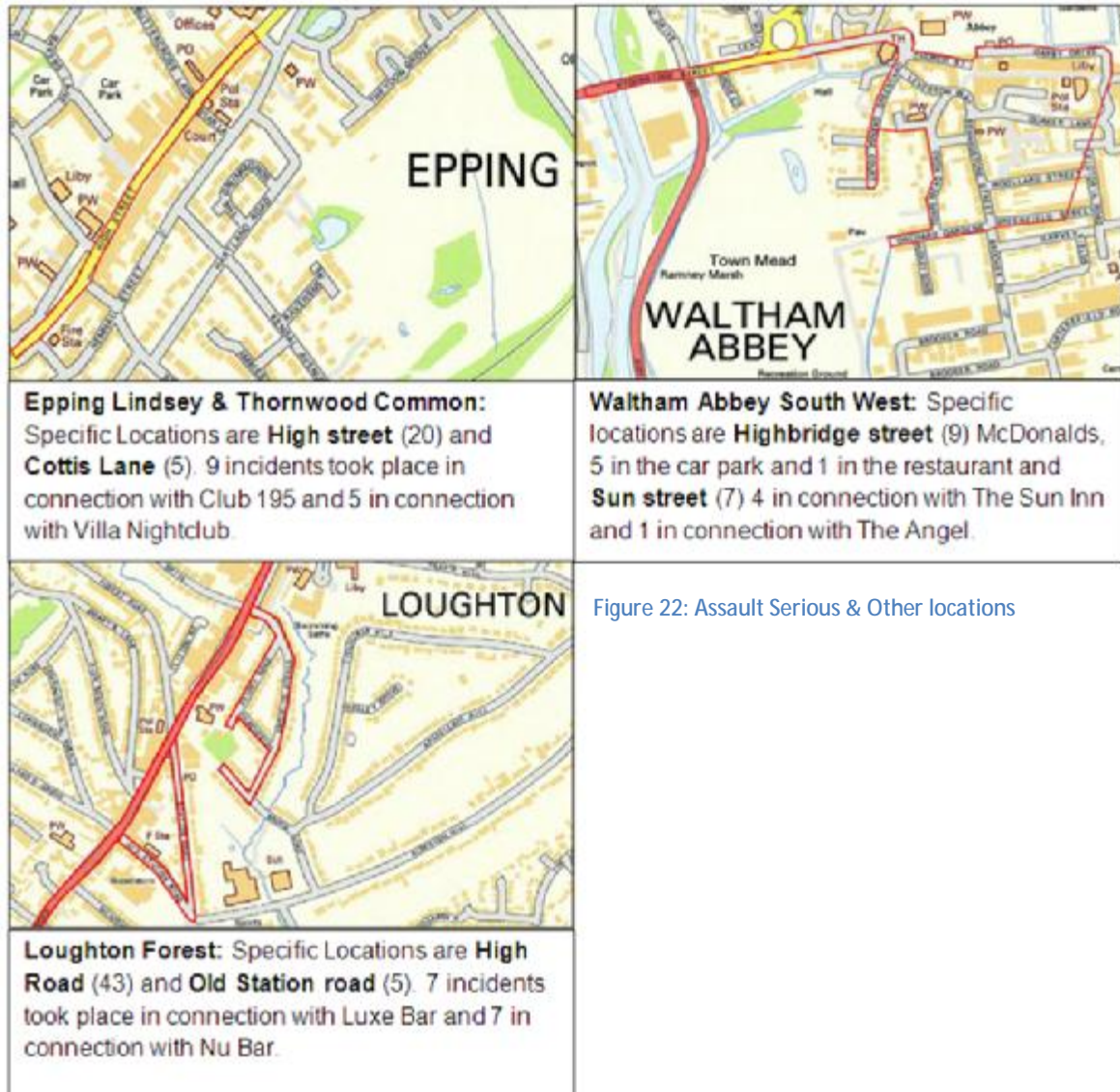


Figure 22: Assault Serious & Other locations

Therefore the main hotspots for assault serious and other are residential areas close to high streets or areas with a high volume of households often suffering with a large number of ASB complaints or domestic violence. The majority of offences are committed during the day, more commonly at weekends between 15:00 and 20:00. This reflects domestic violence, neighbourhood disputes, some attempted robbery offences and road rage, amongst others.

Although a proportion of assaults are linked to NTE, and some domestic assaults took place in high streets and on roads, the proportion of assaults linked to NTE is reasonably low. The majority occurred in residential areas rather than licensed premises or high streets. However what is still unclear is whether those assaults occurred in residential areas between people who had recently been out to a licensed premise or who was under the influence of alcohol. This would indicate a link between NTE and domestic violence.

### 5.3 Victims

545 victims and 151 witnesses have been recorded for the 538 assaults in the district this year. The number of victims is larger than the number of offences because in some cases there was more than one victim to one assault. There is not information of the victim’s age in every case and therefore the graph below is only representative of those victims with age information.

54% of men were victims of assault, the peak age range being 16-20 years. The peak in female victims is commonly between the ages of 21 and 25 years.

There is a 15% repeat victimisation rate for assault in Epping Forest. 8% of victims were described as having severe injuries, the majority of which were male.

Female victims were often assaulted as a result of domestic violence whereas males were often assaulted as a result of NTE, usually in Loughton High Rd or Epping High St or as a result of alcohol in residential areas.

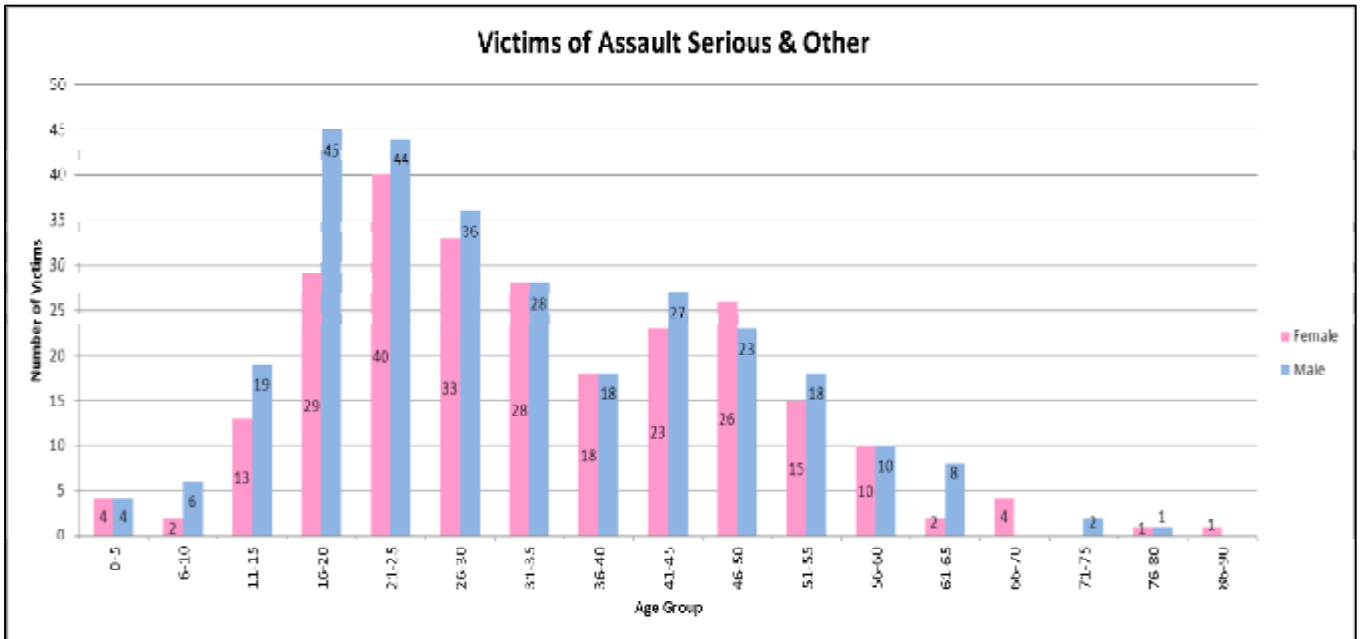


Figure 23: Demographics of victims of assault

Please note, despite domestic violence contributing to 37% of assault, domestic violence is covered in more detail in this report as a separate priority crime. Therefore focus will be given to assaults linked to NTE and assaults not of a domestic nature.



### 5.4 Offenders

125 offenders were charged and 24 were cautioned. 39% of known offenders were intoxicated with alcohol, drugs or both. It is possible that this percentage is in fact higher; however, unfortunately not all cases of alcohol related crime are marked as such.

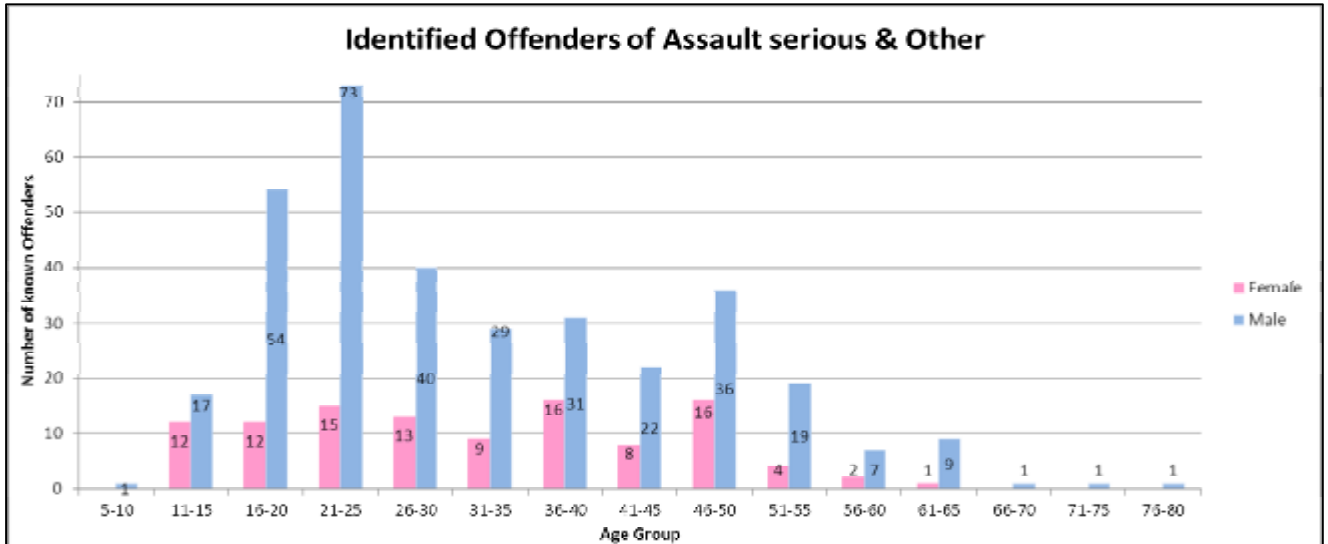


Figure 24: identified offenders of assault serious and other in Epping Forest

The majority of offenders are male between the ages of 21 and 25 years.

The majority of offenders of assault live in the district, specifically Loughton and Waltham Abbey. Offenders do travel from London and surrounding areas of Essex, such as Brentwood, however, in very small numbers.

### 5.5 Summary

- There has been a 1% reduction on last year's figures
- 37% domestic violence related and 23% NTE related.
- Loughton High Road and Epping High Street are the NTE hotspots and Grange Hill and Honey Lane are hotspots in the day.
- Females were more commonly victim to domestic assault whereas males were more commonly victims of NTE assault
- There is some overlap between domestic assault and NTE, where in some cases a domestic assault takes place after or during a night out in a pub or club on the high street.

- Intelligence gaps & problem profile questions;
1. Can repeat victims and offenders be quantified and identified?
  2. Is it possible to establish how many victims were hospitalised and types of injuries?
  3. What is the overlap between DV and NTE? A deeper understanding is needed.

## 6. Domestic Violence

### 6.1 Overview

There were 1143 incidents of domestic abuse this year. This is a 5% decrease on last year's figures, or 66 fewer incidents. Peaks in domestic violence are seen during the summer months and school holidays. This correlates with similar findings in assault serious and other. There are also peaks seen during domestic abuse week and other campaigns designed to raise awareness and encourage reporting. Domestic abuse week usually commences late October to early November.

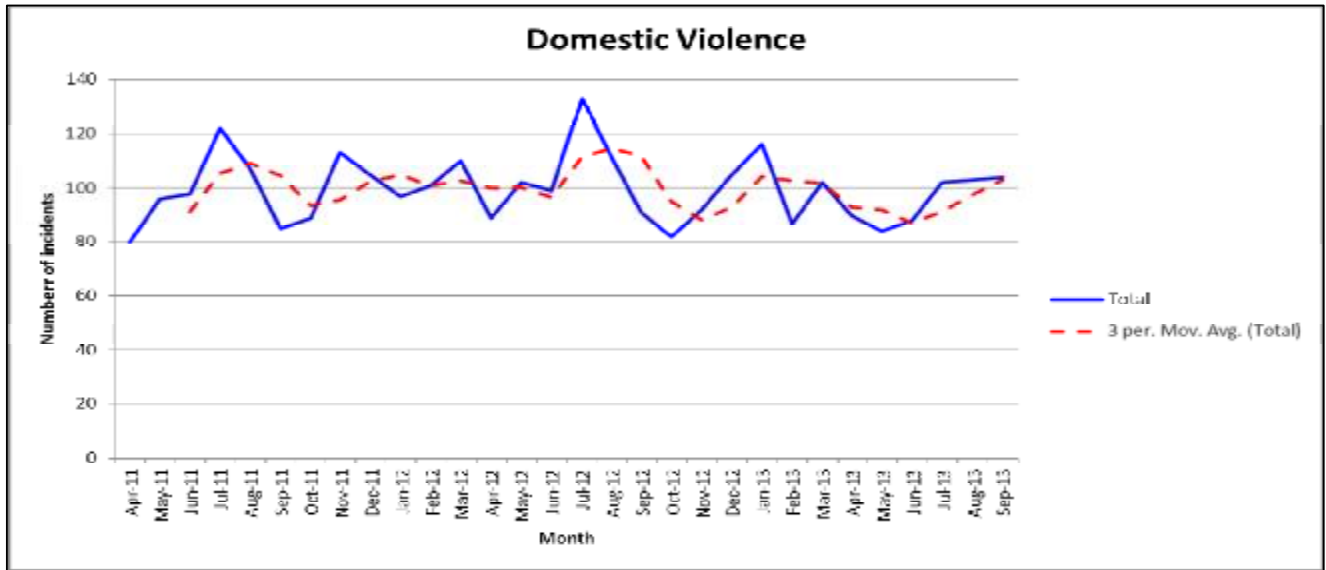


Figure 25: domestic violence in Epping Forest

Domestic abuse teams work actively to encourage victims to report incidents of domestic abuse. Therefore it is encouraging to only see minor reductions in domestic violence.

Domestic violence is not a criminal offence. However it can result in a criminal offence in some instances. The most common criminal offences resulting from domestic violence are assault, harassment and criminal damage to a dwelling. This year there has been a slight increase in harassment offences resulting from domestic violence (17 offences).

### 6.2 Location

The majority of domestic violence is spread widely across the district. This is because a large proportion of domestic violence occurs in the home and therefore hotspots are only indicative of where residents live. This means very little pattern can be established with regards to location. However there are some aspects of domestic abuse that are a result of NTE and these incidents usually take place near high streets such as Epping High Street. 18% of all domestic violence occurred outside of the home either on the road, in a night club, restaurant and so on. The majority, however, took place in the home.

**Epping Lindsey and Thornwood Common** and **Grange Hill** see the largest proportion of domestic violence in the district. This has been the case for the last 2 years. Epping sees the highest proportion of NTE domestic violence whereas Grange Hill sees the highest proportion of domestic violence in the home.

### 6.3 Victims

Victims of domestic abuse are covered in more detailed in assault serious and other. The Epping Forest Community Safety Team and Essex Police work in partnership visiting high risk victims of domestic violence. Preliminary research evaluating the success of these visits has been very positive.

There were 132 repeat victims of domestic violence over the last 6 months (23%).

Of the 62 who received partnership visits after the first offence, there were only 9 repeat victims recorded.

This figure equates to a 15% repeat rate. Therefore the rate of repeat victims after their first partnership visit has dropped by 30%.

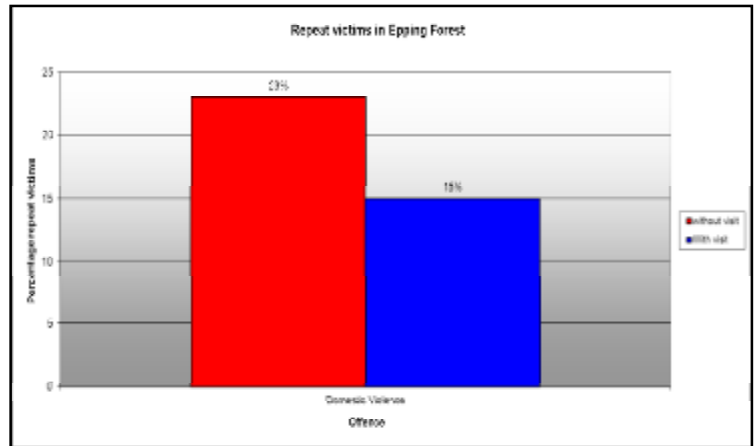


Figure 26: Evaluation of partnership visits to domestic violence victims- Apr 13-Sep 13

In theory this means if all domestic violence victims received a visit from the partnership there could have been a reduction of approximately 46 repeat victims in the last 6 months (based on the current figures).

630 victims were identified. 72% of victims were female. The most common age for a victim was between 21 and 25 years.

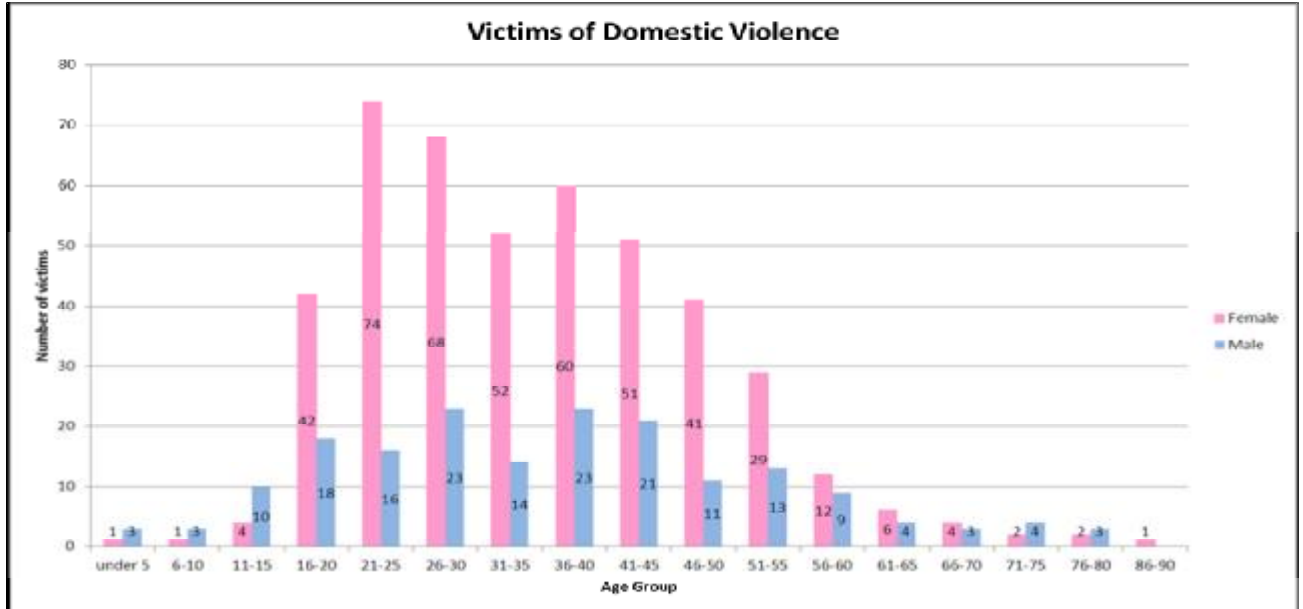


Figure 27: Victims of domestic violence

78% of domestic violence is violent crime for example assault with or without injury. 7% of domestic violence is criminal damage and 2% are sexual offences such as sexual assault.

There were also 421 witnesses of domestic violence. 65% of which were under 10 years of age. Comparatively, domestic violence in Epping Forest has the highest proportion of witnesses under the age of 10 years than any other priority crime in the district.

**6.4 Offender**

83% of all offenders were male. The majority were white. 21% of offenders were marked as being intoxicated either with alcohol, drugs or both. This figure may be higher, however this data is limited to the police systems and it is possible that not all cases involving alcohol have been marked as such.

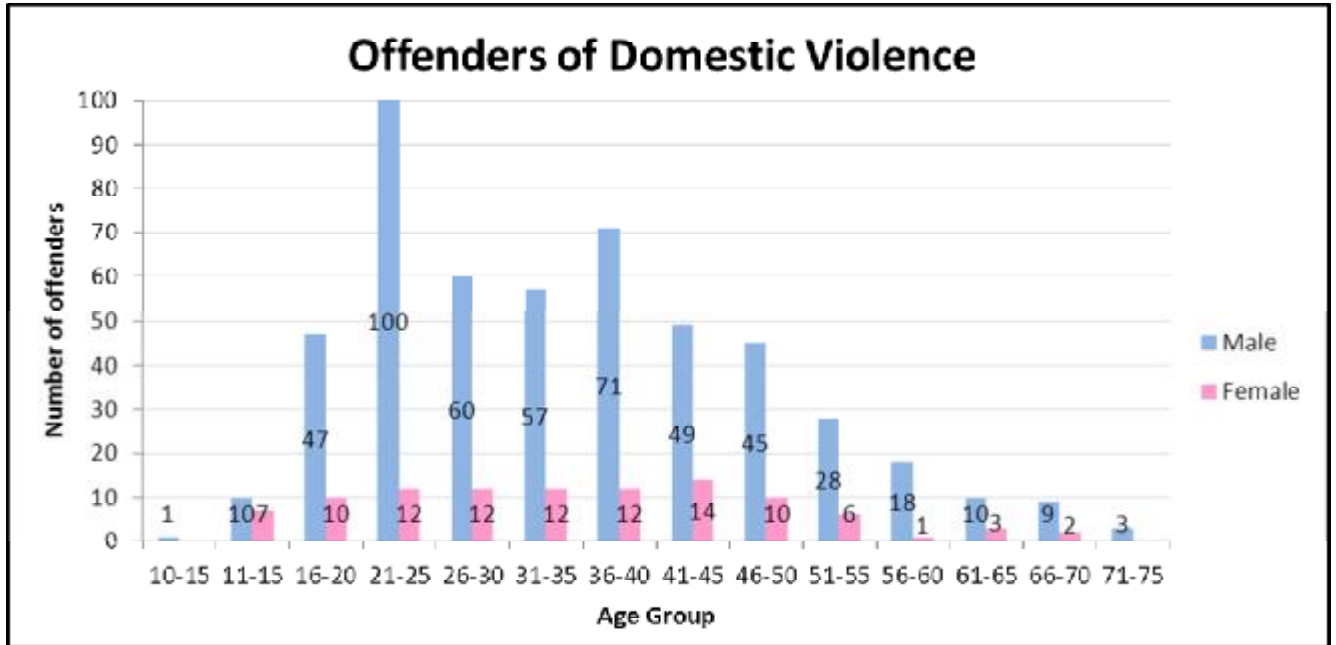


Figure 28: Offenders of domestic violence

**6.5 Summary**

- Domestic violence has decreased by 5% this year
- The percentage of domestic harassment has increased, potentially with the increase in social networking which makes harassment easier for perpetrators.
- 18% of domestic violence occurred outside of the home and may have some links to NTE
- 72% of victims were female and 65% of all witnesses are under the age of 10
- 83% of offenders were male
- 203 victims were ex-partners to the offender and 158 were still in relationships

Intelligence gaps and problem profile questions;

1. Is it possible to establish a pattern between the number of non-crime incidents reported prior to a criminal offence linked to domestic abuse, is there a gradual process?
2. Are there any patterns in MO of offenders/the role of social networking in cyber harassment?
3. Is it possible to quantify how many incidents were influenced by alcohol/ drugs etc.?
4. Is there a link between NTE and domestic abuse?

## 7. Anti-social Behaviour (ASB)

### 7.1 Overview

There were 3639 incidents of ASB this year; this is a 6% reduction on last year's figures, or 244 fewer incidents. The main peaks in ASB correlate with the summer months. This is likely to be linked to increased socialising, an increased number of people out during the warmer months and a larger volume of youths on the streets in the summer holidays.

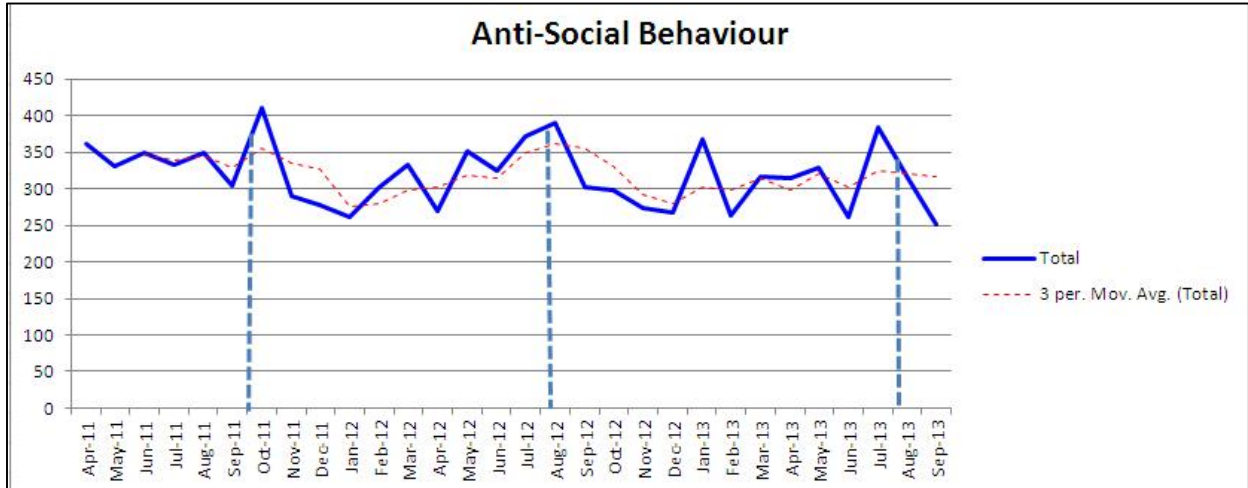


Figure 29: Anti-Social Behaviour by month in Epping Forest

20% of all ASB this year was Nuisance youth related and a further 19% were disturbances.

ASB TYPE	Total	ASB TYPE	Total
Nuisance Youth	733	Driving Complaint	15
Disturbance	706	Trespass	11
Nuisance Other	446	Air Weapon	9
Nuisance vehicle	421	Highway Disruption	5
Nuisance neighbour	351	Aircraft	3
Abandoned Vehicle	283	Road Related	2
Nuisance communications	250	Air Gen	1
Nuisance Noise	213	Concern	1
Threats	108	Laserlight	1
Fireworks	43	RTC causing ASB	1
Obstruction	36	<b>Total</b>	<b>3639</b>

Table 8: ASB types in Epping Forest

- There were 1615 reports of fly tipping to the council, the majority of which occurred in **Waltham Abbey**, specifically **Springfields** and **Harveyfields**.
- There have only been 22 reports of graffiti to the council this year. The majority of graffiti was in **Loughton Fairmead** and the majority was offensive graffiti.
- There were 1419 reports of noise to the council; **Loughton High Road** saw the majority of reports. Loughton has also seen the majority of neighbourhood disputes in the district.

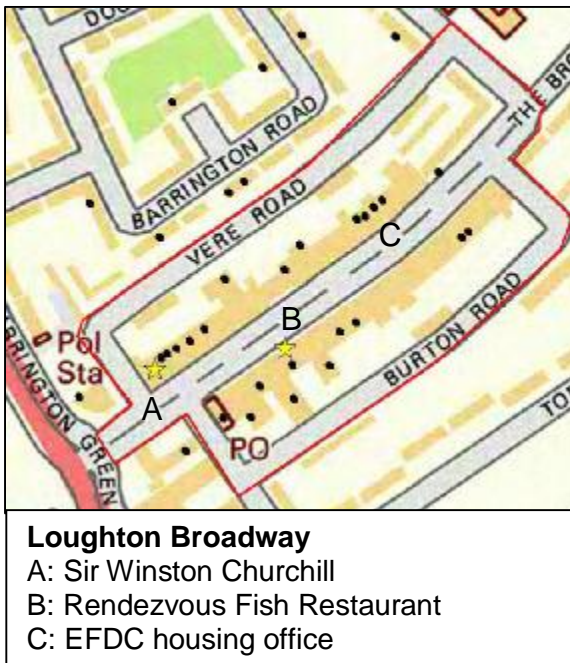


**7.2 Location**

The table below indicates the top 5 wards of ASB in the district. Loughton Broadway sees the highest number of ASB incidents, however, Epping High Street was the hotspot location for night time economy (NTE) related ASB. This is largely due to the licensed premises along the high street. The second largest hotspot for NTE linked ASB is Loughton High Road.

Ward	Total
Loughton Broadway	252
Epping Lindsey & Thornwood	230
Loughton St Mary's	215
Waltham Abbey South West	212
Grange Hill	172

Table 9: Top 5 wards for ASB in Epping Forest



A large number of ASB reports in the district are in the **Broadway** and **Langston road**. The majority of reports in Langston road relate to nuisance vehicles whereas the majority of reports in the Broadway are disturbances. The Broadway also sees the highest number of **nuisance youths** in the district, 75 incidents.

The three main locations reported in ASB reports have been marked on the map (left). Just under 20% of all ASB in the Broadway is linked to NTE (between 2100 and 0400).

This area was also a hotspot for deliberate secondary fires (5). **Loughton Fairmead** was the main hotspot for deliberate secondary fires.

Figure 30: Loughton Broadway Hotspot Locations

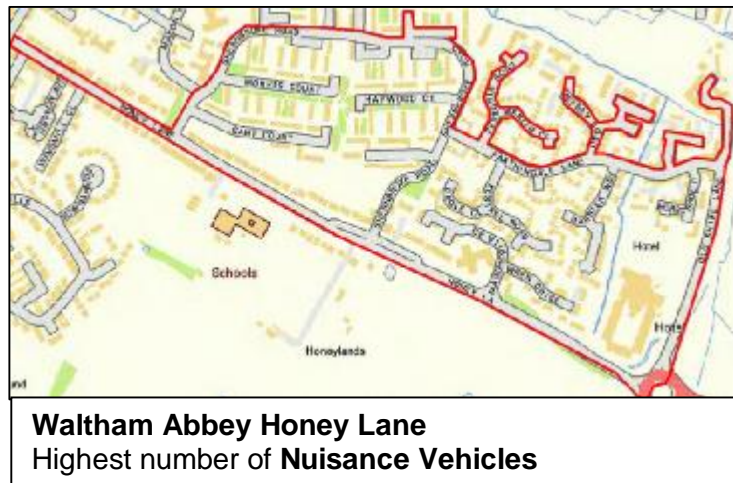
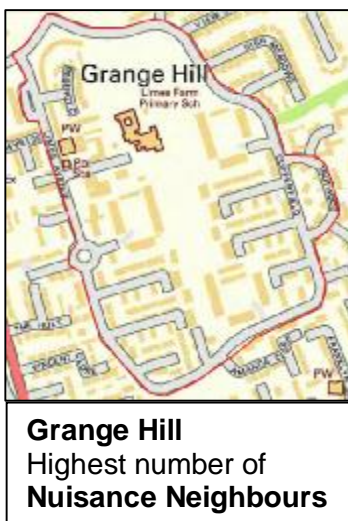


Figure 31: Types of ASB in the district

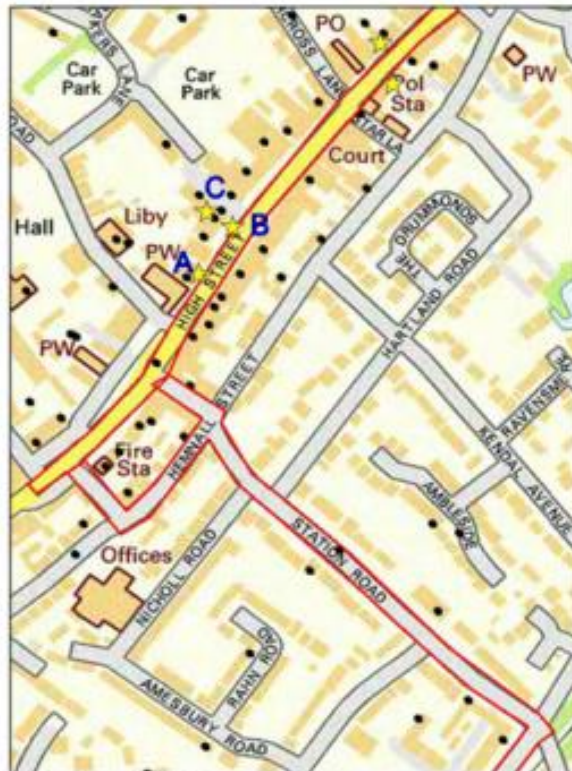
### 7.3 ASB linked to Night Time Economy (NTE)

Night time economy (NTE) in this instance is inclusive of all ASB between 21:00 and 04:00 Friday to Sunday. 17% of all ASB is linked to NTE. The main hotspots are areas with good transport links and a number of licensed premises such as bars and clubs. This being the case, Epping High Street and Loughton High Road are the main hotspots.

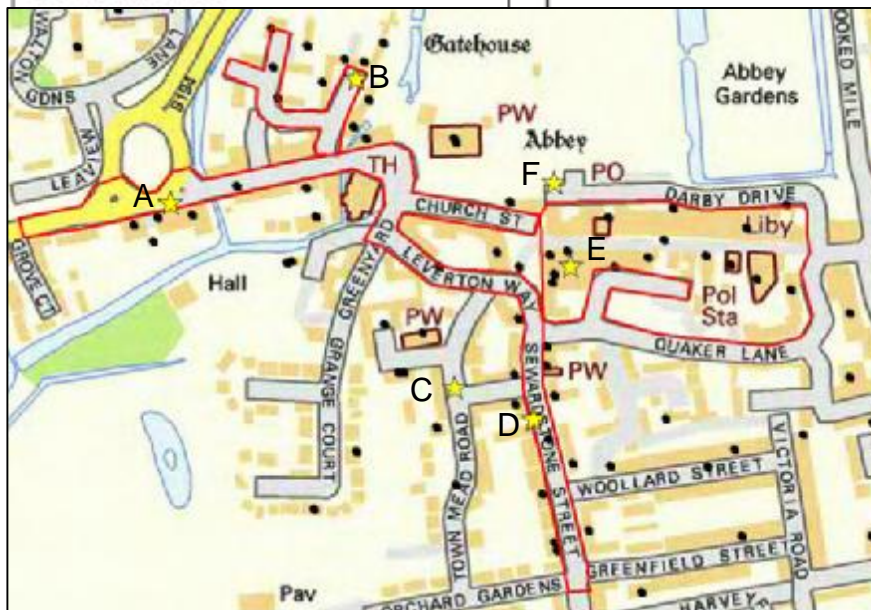
#### Loughton High Road



**Loughton High Rd**  
 A: Nu Bar B: Luxe Bar C: Holly Bush  
 D: The Last Post



**Epping High St**  
 A: Speakeasy B: 195 C: Villa



#### Waltham Abbey South West

- A: Abbey off License
- B: The Crown
- C: The Spotted Cow
- D: The Compasses
- E: The Queen's Arms
- F: Welsh Harp

Figure 32: NTE ASB hotspots



## RESTRICTED

The table below shows the licensed premises linked to ASB in the district. A large number of incidents may be linked to premises but occur down the street away from the location, for example a fight in Club 195 may continue along Epping High Street and is stopped by police at the bus stop. In this instance the location will be the bus stop. With this in mind it is important to note when looking at the table this may not be representative of all ASB linked to licensed premises.

Licensed Premise	Location	# reports
Club 195/ Villa	Rear of 195 High St, Epping	20
Top golf	Chigwell	14
Waitrose	27 Queens Rd, Buckhurst Hill	10
Tesco	Sewardstone Rd, Waltham Abbey	10
Luxe Bar	126 High Rd, Loughton	10
Nu Bar	High St, Loughton	10
The Three Jolly Wheelers	Chigwell Rd, Woodford Green	9
The Green Dragon	21 Market SQ, Waltham Abbey	8
Sir Winston Churchill	The Broadway, Loughton	8
Speak Easy	High Rd, Epping	7
Kings Oak Hotel	High Beech, Loughton	10
The Sun Inn	21 Sun St, Waltham Abbey	5
Job Centre	284 High St, Loughton	5
Rendezvous Fish Restaurant	28 The Broadway, Loughton	4

### 7.4 Summary

- There has been a 6% reduction in ASB since last year
- 20% of all ASB is nuisance youths and a further 19% is disturbances
- Loughton Broadway sees the highest number of ASB incidents; however Epping High Street and Loughton High Road see the highest number of ASB incidents linked to NTE.
- Premises with a high number of reports are Club 195 and Villa with incidents usually occurring in Cottis Lane.

Intelligence gaps and problem profile questions;

1. Is it possible to create a snapshot of repeat locations and repeat victims of ASB?
2. Could Local authority data be provided and presented alongside police ASB data to help understand all ASB issues? Are specific ASB issues only being reported to the council and not the police?
3. Are there any areas that CCTV does not cover which sees a large volume of ASB?
4. Is it possible to provide a snapshot of ASB incidents influence by alcohol, drugs or both?



## Section III: Emerging crime in Epping Forest District

### 8. Emerging trends

#### 8.1 Courier Crime

Op Seaford is a police operation designed to tackle courier crime whereby the perpetrator collects pin numbers, cards and other bank details from the victim which are then used to fraudulently withdraw money. The majority of offences involve the perpetrator purporting to be a police officer and informing the victim there has been some fraudulent activity on their bank cards. They organise for a courier to collect the cards in a sealed envelope with the pin numbers attached. This is disguised with some security advice on how to keep bank details safe. The names PC Morris and PC Clark from Holborn or Hammersmith are consistently used.

In other cases the perpetrators have confiscated money on the basis it is fraudulent or taken bank details over the phone purporting as a police officer, all of which come under the Op Seaford responsibility.

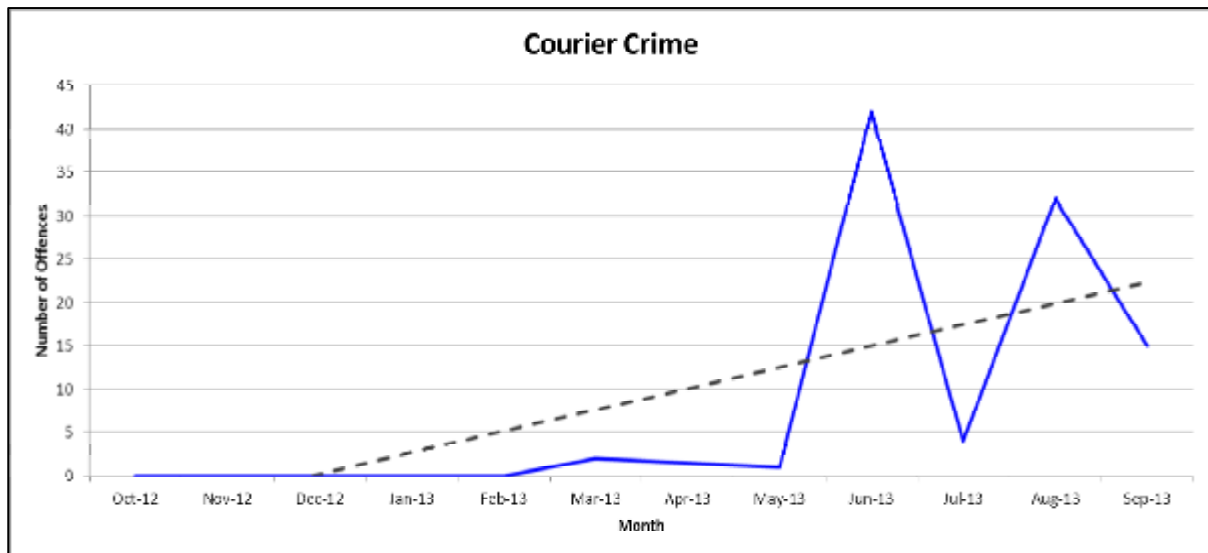


Figure 33: Courier crime in Epping Forest

There were 119 Op Seaford offences, starting in March and peaking in June. The dotted line on the graph below shows the trend line. This line indicates the overall direction of travel of courier crime. In this case it is clear this crime is increasing and becoming more prevalent in the last few months.

According to Trading Standards records there were 21 rogue trader incidents last year and 20 this year targeting the elderly. A direct quote from the trading standards analyst states 'This is not the extent of the problem'. Meaning several incidents go unreported or are incorrectly recorded as ASB and so on. This could be an indicator crime against elderly people is on the increase.

#### 8.2 Location

The hotspot locations for courier crime were **Theydon Bois** and **Epping Hemnall**. These locations have a much larger population of over 65s than other areas of the district. In

Theydon Bois and Epping Hemnall 25% of the population are over the age of 65. Compared to the district average, which is just over 21%, hotspot areas have a significantly higher proportion of elderly residents.

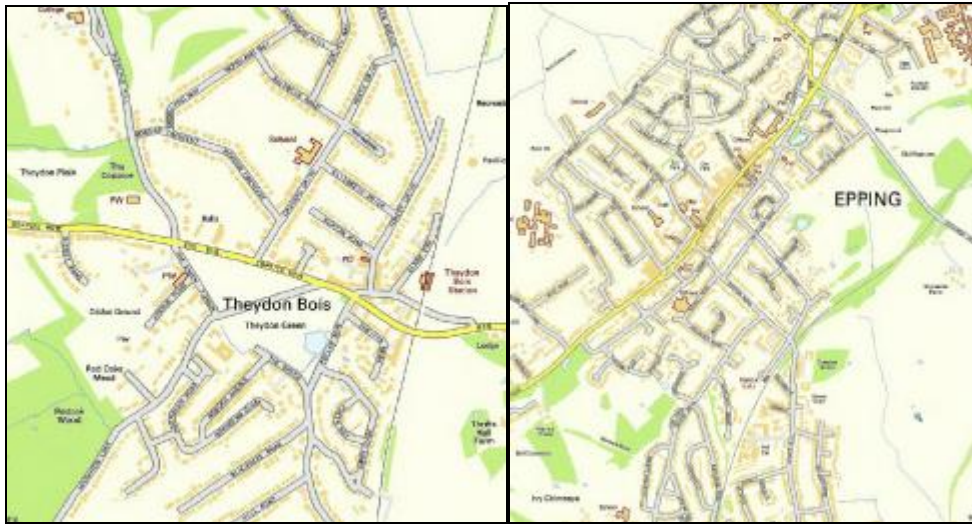


Figure 34: Courier crime locations

### 8.3 Victims

72% of all victims were over the age of 65 and two thirds were female. The peak age group of victims was between 76 and 85 years. Almost all victims were of white ethnicity.

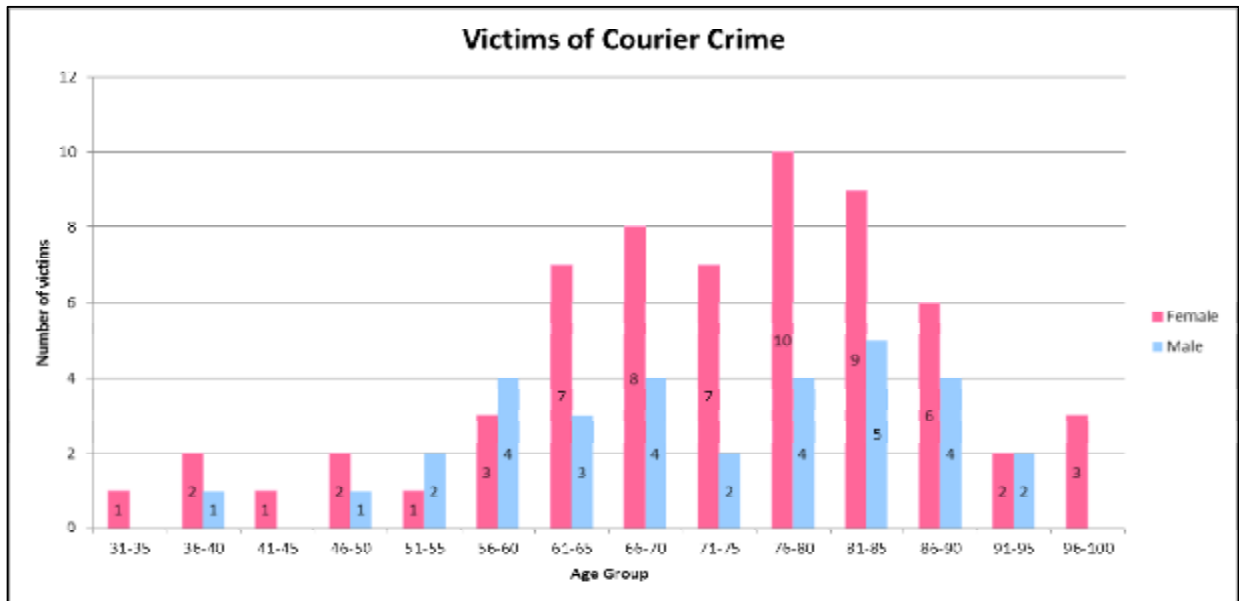


Figure 35: victims of courier crime in Epping Forest

### Offenders

4 offenders were identified in connection with courier crime. All individuals were males, 3 were in their late teens to early 20s and one in his early 40s. 2 perpetrators were white English, 1 was Asian and 1 Italian.

## Section IV: Offenders in Epping Forest District

### Youth Offending

The term 'young offender' refers to anyone known to the police committing crime in Epping Forest between the ages of 10 and 17. The following graph identifies the young offenders in Epping Forest by age.

124 young offenders were identified, 74% of which were male.

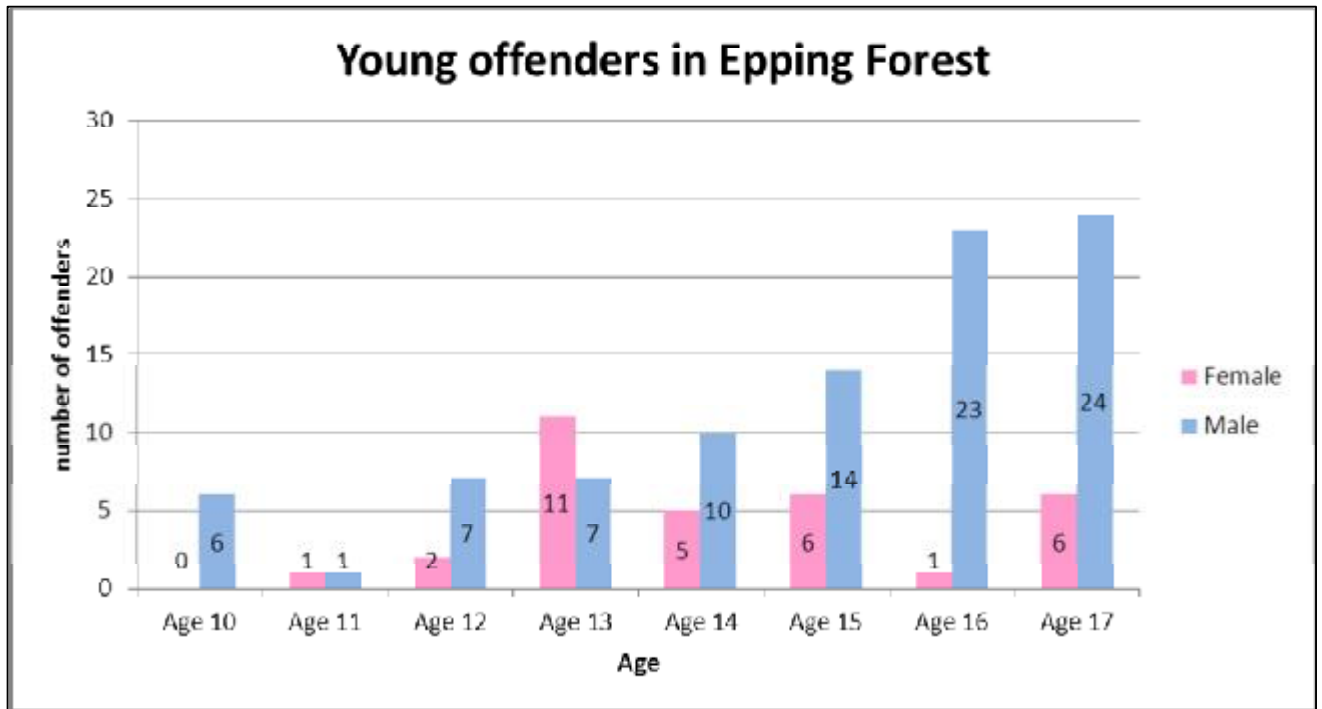


Figure 36: Age and gender of young offenders in Epping Forest provided by the Performance Information Unit of Essex Police between April 2012 and March 2013

151 offences were committed by young offenders between 01/04/12 and 31/03/13. The majority of offences committed by young people in Epping Forest were violent offences and shoplifting. There is also evidence of some drug offences being committed by young offenders.

Offence	Total
Assault with injury	27
Assault without injury	25
Possession of Controlled Drugs (Cannabis)	17
Shoplifting	12
Public fear, alarm or distress	11

Table 10: Top 5 crimes committed by young offenders in Epping Forest

109 offenders only committed 1 offence in this 12 month period and a further 18 were repeat young offenders. This means there is a 15% repeat rate of young offenders. This very small figure suggests intervention after the first offence keeps the number of repeat offenders low.

## Reoffending

Integrated Offender Management (IOM) produces a cohort of prolific offenders colour coded based on their level of co-operation. Red offenders are not complaint with the IOM team, amber offenders could be compliant at times and not compliant at others, green offenders are compliant with the IOM team and blue offenders are in prison, recalled or suspended from the scheme.

The number of offenders in the IOM scheme in Epping Forest has decreased slightly since April 2012. There are currently 30 offenders in Epping Forest and Brentwood in the IOM cohort. 12 are red, not compliant, 6 are amber, 6 are green and 6 are blue.

There has been a slight increase in the rate of reoffending within the IOM cohort. Currently there is a 17% reoffending rate for offenders in IOM.

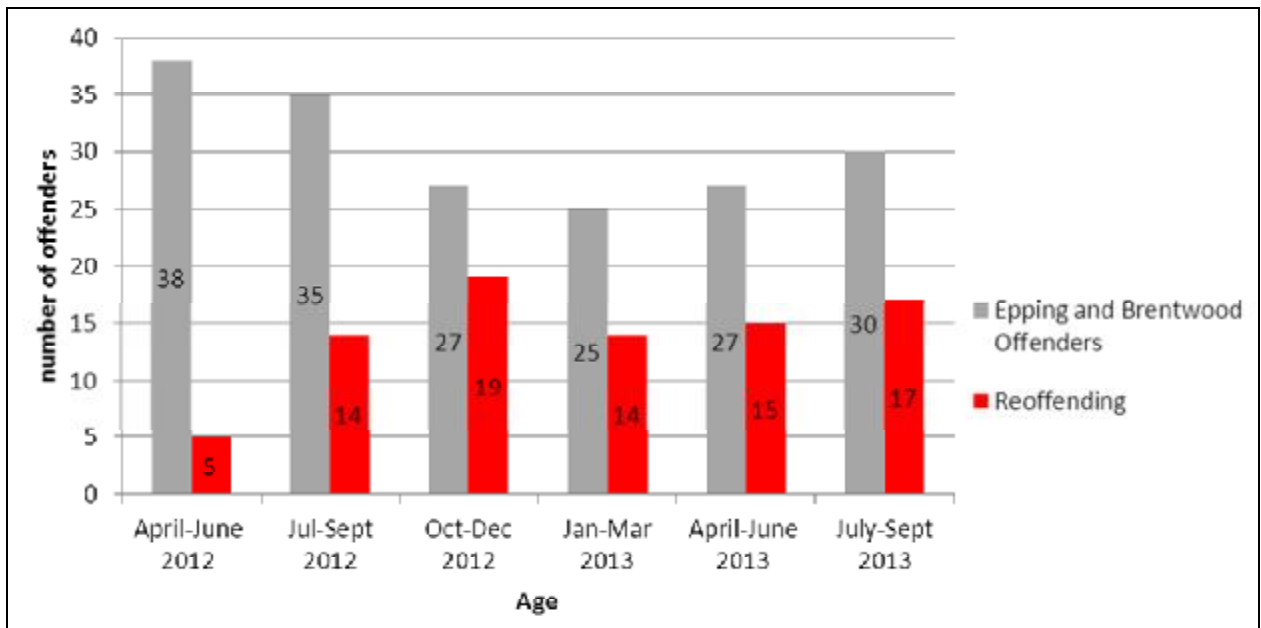


Figure 37: IOM offender number and reoffending rate

## Section V: Conclusions

### Recommendations and next steps

The analysis in this report indicates areas of crime that require focus and helps the community safety partnership to direct crime prevention more effectively to the most vulnerable victims and locations in the district.

Based on the analysis in this report, the following recommendations may help to target and reduce priority crime in Epping Forest;

#### Dwelling Burglary

Crime prevention advice around home security, focused in Loughton Fairmead and Buckhurst Hill west. A large number of burglaries are also evident in Limes Farm, Grange Hill and therefore this location may also benefit from advice.
--

Initiatives such as Home Bright, which provides segment timers and crime prevention advice around burglary in the autumn/winter peak, are also most effectively placed in Loughton Fairmead and Buckhurst Hill.
---

Specific advice around protection of valuable property in the home.
---

Crime prevention advice around rogue traders, courier crime and distraction burglary would be most effectively targeted in Epping Hemnall and Theydon Bois where 25% of the population are over 65. The most effective way to do this could be via churches and Active Crew.
--

#### Vehicle Crime

Crime prevention advice around tool security in vans
--

Vehicle crime prevention is most effectively placed in Roundhills, Waltham Abbey Honey Lane and Loughton St. Marys.
---

A reminder may be required about keeping vehicles secure, particularly during the winter months when residents often leave their vehicles running on driveways to clear ice from the windscreen. Approximately 9% of all vehicle crime last year involved an insecure vehicle.
--

Reminders about not leaving valuables on show in vehicles
---

## RESTRICTED

### ASB

Focus on nuisance youth behaviour and support to repeat victims in Loughton Broadway.

Attention to nuisance vehicle ASB in Waltham Abbey

A focus may be needed in Limes Farm, Grange Hill regarding neighbourhood disputes. Mediation and support for repeat victims are services which may be useful in this location. ASB in Limes Farm does appear to escalate to intimidating behaviour at times such as dangerous driving and threats.

Springfields and Harveyfields have seen the majority of fly tipping reported to the council this year. A CCTV presence may be required in these locations.

### Domestic Violence

The community safety partnership's success in reducing repeat victims suggests partnership visits designed to safeguard victims may be working effectively. Areas which may benefit the most from these visits are Epping Lindsey and Thornwood Common and Grange Hill.

A focus is needed on the role night time economy plays in domestic violence. A further crime pattern analysis will hopefully provide more understanding and inform future initiatives.

Further analysis into the correlations between social demographics and domestic violence is needed to help identify trends in the locations of domestic violence.

### Assault Serious & Other

Violence during the day is most prominent in Grange Hill and Waltham Abbey Honey Lane. This manifests itself as ASB and then escalates, on occasion, to threatening behaviour, weapons, dangerous dogs and assault.

Monitoring neighbourhood disputes and tension in Waltham Abbey Honey Lane and Limes Farm, Grange Hill on a regular basis will help to establish whether tensions are building. This will indicate when violence is increasing in the area. This can be done by assessing the number of repeat ASB victims

This monitoring should also be applied to other hotspot areas such as Loughton Fairmead and Loughton Broadway. This will help to establish if a similar pattern of tension is building which would give the community safety partnership an indication violence could increase in these locations too.

## Appendix A: Local Priority Selection Matrix

Crime Type	Number	Volume	Seriousness	Predicted Direction of Travel	Performance	Public Concern	Repeat Victimization	Total Score	Rank
Anti-social Behaviour (LA)								0	9
Anti-social Behaviour (Police)	3639	4	3	0	2	2	4	15	3
Assault serious and other	538	3	4	2	3		3	15	2
Assault without injury	440	2	3	3	3		2	13	5
Burglary Dwelling (incl attempts)	751	3	4	0	4	3	1	15	2
Burglary Other (incl attempts)	417	2	4	3	2	2	1	14	4
Criminal Damage	838	3	3	2	2	2	1	13	5
Domestic Abuse	1143	4	4	4	3	2	4	21	1
Drug Offences	263	2		1	2	2	2	9	8
Other Theft	973	3	3	0	4		3	13	5
Public Order Offences	207	2		2	3	2	4	13	5
Racially/ religiously aggravated crime	64	1	2	1	3	2	2	11	6
Robbery	92	1	3	3	3	2	1	13	5
Sexual Offences	93	1	4	4	1	2	2	14	4
Shoplifting	321	2	1	2	1		4	10	7
TFMV	1072	4	4	1	4	2	1	16	2
TOMV	358	2	4	1	4	2	1	14	4
Vehicle Interference	120	2	2	4	4		1	13	5

<u>Volume</u>	<u>Predicted DOT (iQuanta Projections)</u>	<u>Performance (iQuanta Comparison)</u>	<u>Repeat Victimization (%)</u>	<u>Seriousness</u>
4= 1000+ offences 3= 500-999 offences 2= 101-499 offences 1= 1-100 offences 0= 0 offences	4= Long term upwards trend, recent up 3= long term down, recent up 2= long term up, recent stable 1= long term up, recent down 0= Long term down, recent down	4= Top 3= Above Upper Bound 2= Average 1= Below Lower Bound 0= Bottom	4= 30%+ 3= 20-30% 2= 10-20% 1= 01-10% 0= 0%	4= £1,000,000+ 3= £100,000 - £999,999 2= £50,000 - £99,999 1= £1,000 - £49,999 0= Less than £1,000

This page is intentionally left blank





# Epping Forest District Community Safety

## Partnership Plan



April 2014

## Contents

Vision .....	3
Introduction .....	4
The 2010-31 One Epping Forest Community Strategy .....	5
Police and Crime Plan .....	6
PCC Focus Areas.....	6
Public Health .....	7
Strategic Priorities .....	8
Strategic Assessment (SA) 2014-15 .....	9
Local Priorities 2014-15 .....	10
Emerging Trends .....	10
Performance against our local priorities 2013-14.....	11
Initiative: Crucial Crew .....	13
Initiative: Reality Roadshow .....	13
Initiative: Integrated Offender Management (IOM).....	14
Initiative: Sanctuary Scheme.....	14
Initiative: Partnership Visits.....	15
Initiative: Public Space CCTV .....	15
Initiative: Street Pastors .....	16
Initiative: Safe & Sound Epping Forest.....	16
Initiative: E-Mail Families .....	17
Initiative: Redeployable Cameras.....	17
Initiative: Restore Community Shops .....	18
Initiative: J9 Signposting project.....	18
Initiative: Anti Social Behaviour .....	19
Initiative: Community Engagements .....	19
Initiative: Night Time Economy.....	20
Initiative: Lock 'em Out.....	20
Initiative: HomeSafe.....	21
Initiative: Older Persons Crucial Crew .....	21
Initiative: Preventing bogus caller/rogue trader/repeat ASB victimisation .....	22
Initiative: West LPA Partnership Analyst .....	22
Initiative: Handyperson Scheme.....	22
Initiative: Design Out Crime .....	23
Initiative: Electric Blanket Testing.....	23
Initiative: Fire Safety Advice.....	23
Initiative: Fire safety for vulnerable groups .....	24
Initiative: Firebreak Youth Engagement Scheme .....	24
Local Priority Selection Matrix 2014-15 .....	25
Epping Forest District Problem Solving Structure .....	26
Local Delivery Groups .....	27

## Vision

*All people in Epping Forest District have the right to live their lives without fear of being a victim of crime or anti-social behaviour due to their beliefs, ethnicity or life style.*

*Epping Forest District Community Safety Partnership will work together to achieve this vision and continue to make the district a safe place to live and work.*



Essex County  
Fire & Rescue Service



## **Introduction**

Epping Forest District Community Safety Partnership (CSP) is a statutory body consisting of Epping Forest District Council, Essex County Council, Essex Police and Police & Crime Commissioner, Essex County Fire and Rescue Service, West Essex Primary Care Trust, Essex Probation and members of the Voluntary Action Epping Forest (VAEF). The partnership has a duty to work together to reduce crime, disorder and anti-social behaviour locally.

This partnership plan is a legal requirement and is refreshed annually by using findings from the strategic assessment. Our current plan has taken into account the findings of the comprehensive spending review and has adjusted partnership problem solving priorities and structures in line with those findings. The plan also takes into account the long term One Epping Forest Community Strategy 2010-31 and Essex County Council Safer Essex Partnership priorities.

Public Service is currently undergoing fundamental changes in working practices, coupled with reductions in staffing levels and budget allocations. It is now necessary that organisations provide more for less. This plan seeks to provide a rationalisation of responsibilities, but still deliver an effective strategy to reduce crime, disorder and anti-social behaviour in Epping Forest District.

### ***PCC Funding***

Awaiting full details from the Police and Crime Commissioners Office 2014-15

#### ***2013-2014***

#### **£21,800 – Core Funding**

West Area Local Policing Area (LPA) Analyst £6922  
Safe & Sound Project £5500  
Prison me no Way £4000  
Arson Kits £1140  
J9 domestic Awareness Project £1250  
Lock em out Campaign £2988

#### **New Initiatives Funding**

Older Peoples Safety Event £2800  
Operation Homesafe £1485.00  
Handy Person Scheme CCTV £1052.88



The Epping Forest Local Strategic Partnership (LSP) is a voluntary partnership that brings the public, private and voluntary sector agencies responsible for the provision of services across the District together to improve our quality of life.

The LSP recognises and responds to the priorities and needs of local people based upon the findings from joint consultation and report annually on progress at the Epping Forest District Community Conference. The full LSP Partnership meets four times a year and its role is to oversee the overall strategic direction of the LSP.

## **The 2010-31 One Epping Forest Community Strategy**

The 'Safer' theme of this long term strategy sets out two key objectives.

**Key Objective 1.** – Deliver innovative programmes to tackle fear of crime and promote respect and enable all residents and stakeholders to play an active role in making their communities safer.

**Key Objective 2.** – Build better links with partners in London, Hertfordshire and across Essex to deliver more integrated community safety programmes.

The aspirations of both of these key objectives are incorporated in our partnership plan and action plan setting at a local level.

This 3 year partnership plan has to remain flexible to deal with emerging trends and the changing needs of the community. Public contact and reassurance is crucial in the delivery of any initiative. Public engagement and support for their local services will reduce negative perceptions and promote feelings of confidence.

## **Police and Crime Plan**

**Nick Alston** CBE, is the Conservative Police and Crime Commissioner for Essex Police. He is the first person to hold the post and was elected on 15 November 2012.

The Police and Crime Plan sets out the Police and Crime Commissioner's priorities and reflects his wider community safety responsibilities.

The Commissioner has a duty to issue the Police and Crime Plan by the 31st March 2013 and he will hold the Chief Constable to account on the delivery of the areas of focus it sets out.

## **PCC Focus Areas**

The areas of focus are:

- Ensuring local solutions meet local problems
- Reducing domestic abuse
- Supporting our victims of crime
- Reducing youth offending and all types of re-offending
- Tackling the consequences of alcohol and drug abuse and mental health issues
- Improving road safety
- Improving crime prevention
- Increasing efficiency in policing through collaborative working and innovation



## **Clinical Commissioning Groups**

From April 2013 clinical commissioning groups (CCGs) will be required to be a member of the CSP, previously the National Health Service (NHS) was represented by the local Primary Care Trust (PCT) under the Health and Social Care Act 2012.

There are many areas which both CSPs and CCGs may have jointly or separately identified as priorities either through developing the joint health and wellbeing strategy or through the CSP. These could include

- Reducing alcohol and drug misuse
- Reducing domestic and sexual violence
- Offender health services (including mental health and learning disability services)
- Improving access to mental health services
- Reducing anti-social behaviour
- Reducing street and youth violence
- Strengthening child and vulnerable adult safeguarding services.

## **Public Health**

From April 2013 the new Essex County Council Public Health function will take responsibility, under the transfer of Public Health from PCTs, for drug and alcohol services across Essex. The Drug and Alcohol Team (EDAAT) will be an integral part of this Public Health function and remains committed to developing and delivering activity which contributes to a single overarching outcome: *“The reduction in the harm caused by substance use in the County of Essex”*.

The intention will be to maintain a partnership approach to commissioning service provision from resources provided to the County Council through the Public Health Grant and it will remain a key responsibility to deliver the National Drug Strategy and the Government’s Alcohol Strategy. In addition the Public Health function will be responsible for delivering against the newly published Public Health Outcomes Framework amongst the wider range of outcome frameworks being developed both nationally and locally (Social Care, NHS, Criminal Justice and Children’s).

## Strategic Priorities

A clear theme throughout the partnership plan should be towards delivering sustainable improvements in community safety. This will require the strategic priorities to be based around four overarching strategic priorities;-

- Ø Identifying those agencies and resources that are best placed to respond and deliver improvements to community safety.
- Ø Providing a balanced consideration between enforcement, prevention, risk reduction and reassurance.
- Ø Specifically identify how responses can better control offenders, improve guardianship, and improve the management of places.
- Ø Identify gaps in service provision and recommend the development of new and current services

### **1. Diverting young people away from crime and ASB**

- Active consultation with young people over concerns, perceptions and their priorities
- Diversionary and educational schemes through Targeted Youth Support which increase participation and inclusion to those at risk of offending and high risk of victimisation
- Collaborative problem solving between the Partnership, schools, youth centres and other education and youth activity providers, with particular focus towards victimisation risk reduction, and alcohol and drug abuse awareness.

### **2. Reduce re-offending**

- Coordinated Partnership activity towards those at highest risk of re-offending with particular emphasis on participation in Integrated Offender Management
- Identifying the drivers towards offending and seeking multi-agency means of reducing or removing them with particular emphasis on drugs and alcohol abuse.
- Make effective use of the criminal justice system when required.
- Ensure the effective management of perpetrators of domestic abuse.

### **3. Provide vulnerable victim care and reduce repeat victimisation**

- Understanding repeat victimisation in Epping Forest
- Reducing the vulnerability of those repeatedly victimised
- Provide practical victim care engagement
- Raise awareness and understanding of domestic abuse and the advice and help available
- Ensure a robust network of partners responding to domestic abuse
- Monitor progress of action plans from Domestic Homicide Reviews

### **4. Town Centre and Neighbourhood Safety**

- Coordinated multi-agency interventions and initiatives that deliver sustainable improvements in community safety, balancing between focused, evidence-based operational tactics and designing out crime and ASB through reducing the opportunities and temptations to offend and behave anti-socially
- Collaborative problem-solving between the Partnership with retailers, licensed premises, and local businesses

- Reassurance awareness that promotes the town centres
- Reducing crime to property, in particular dwellings and vehicles
- Collaborative problem solving between the Partnership and local communities to positively address local concerns
- Reassurance targeting to reduce the fear of crime and improve public confidence

## **Strategic Assessment (SA) 2014-15**

Epping Forest District Community Safety Partnership has to produce an annual strategic assessment. The framework of the strategic assessment includes the following components:-

- Analysis of the levels and patterns of crime, disorder and substance misuse
- Changes in the levels and patterns of crime, disorder and substance misuse since the last strategic assessment
- Analysis of why these changes have occurred
- Assessment of the extent to which last years plan was implemented

The purpose of the strategic assessment is to provide knowledge and understanding of community safety problems that will inform and enable the partners to:-

- Understand the patterns of crime, disorder and substance misuse
- Set clear and robust priorities for the partnership
- Develop activity that is driven by reliable intelligence and meets the needs of the local community
- Deploy resources effectively and present value for money
- Undertake annual reviews and plan activity based on a clear understanding of the issues and priorities.

Community engagement is a key element in identifying local priorities. Consultation takes place during the year with established structures, such as, Essex Watch, residents associations, Neighbourhood Action Panels etc. Epping Forest District Council hosts an on-line public perception survey where results are recorded and used to identify direction for the strategic assessment. The partnership hold an annual 'Face the Public' meeting where all partners are represented and give the public the opportunity to question the activities and scrutinise the partnership plan.

The local priorities contained in the strategic assessment have been identified using a problem oriented approach and specific areas of concern have been identified using a priority selection process which takes into account the following factors:-

- Volume of offences
- Seriousness (based on cost of crime)
- Predicted direction of travel (based on Home Office projections)
- Performance (compared to other most similar partnership groups nationally)
- Public concern (local public perception surveys)
- Repeat victimisation (number of victims subject to 2 or more offences)

A summary of the strategic assessment can be found on Epping Forest District Council and Community Safety Partnership web sites at:-

[www.eppingforestdc.gov.uk/](http://www.eppingforestdc.gov.uk/)

[www.safercommunitieseppping.org.uk/index](http://www.safercommunitieseppping.org.uk/index)

## **Local Priorities 2014-15**

The Community Safety Partnership concentrates on those offences causing the most harm to the district over the period of the strategic assessment. Those offences are identified through the application of a scanning technique using the Local Priority Selection Matrix. The matrix takes into account a number of different performance indicators including public perception when establishing where partnership activity should be concentrated. Once the offences are identified they form our local priorities strategy and become the areas partners concentrate on when addressing the overarching strategic priorities. Our local priorities for the coming year will be:-

- **Domestic Abuse**
- **Burglary dwelling**
- **Theft from motor vehicle**
- **Anti-social Behaviour**
- **Assault with serious injury**

## **Emerging Trends**

- **Courier crime**

Sophisticated bogus official, mainly purporting to be a police officer obtaining bank card details targeting elderly victims.

*See appendix A for the full matrix*

## Performance against our local priorities 2013-14

### ***Key findings***

**Overall crime down 5% or 394 less offences since 2010**

**Burglary dwelling down 17%**

**Domestic Abuse down 5%**

**Theft from vehicle no change**

**Anti-social Behaviour down 6%**

### ***Epping Forest District Community Safety Partnership Headlines***

Partnership visits to high risk domestic abuse victims has reduced chances of repeat victimisation by 30%

Partnership visits together with targeted predictive policing (Op Insight) reduced repeat victimisation of dwelling burglary by over 50%

58% of all burglaries occurred in the autumn/winter peak (however, this peak has reduced by 15% since last year)

Lock 'em Out home security booklets produced & launched March 2013

HomeSafe, home safety campaign launched October 2013 in partnership with the districts estate agents and EFDC Housing Services giving advice to new residents and house buyers in the district

Consistent performance reducing anti-social behaviour - incidents recorded are continuing to fall for the fourth year running

Commitment to Integrated Offender Management

J9 Domestic Abuse awareness training launched

Youth engagement and education provided through, Crucial Crew & Reality Roadshow

Upgraded public space CCTV operating successfully in Debden Broadway

Regular performance management and evaluation provided by partnership analyst



<b>Initiative: Crucial Crew</b>						<b>Strategic Priority 1</b>
<b>Objective</b>	<b>Action(s)</b>	<b>Resources</b>	<b>Target date</b>	<b>Lead</b>	<b>Measurement</b>	<b>Date complete</b>
Provide practical learning life-skills scenarios for all Year 6 pupils in EFD and also offered to Brentwood schools	Identify and secure suitable venue  Form Local Working Group  Identify and secure scenario providers  Obtain sufficient support staff to run event	£1,000 – High Sheriff’s Award £10,000 – EFDC £6500 – schools transport	June 2014	Caroline Wiggins (Community Safety)  Gill Wallis (Community Development)	Number of schools participating  Positive feedback from students and teachers	June 2014
<b>Initiative: Reality Roadshow</b>						<b>Strategic Priority 1</b>
<b>Objective</b>	<b>Action(s)</b>	<b>Resources</b>	<b>Target date</b>	<b>Lead</b>	<b>Measurement</b>	<b>Date complete</b>
Provide practical learning life-skills scenarios for Year 9 secondary school pupils in EFD	Identify and secure suitable venue  Form Local Working Group  Identify and secure scenario providers  Obtain sufficient support staff to run event	£2,500 - EFDC	Sept 2013 – July 2014	Caroline Wiggins (Community Safety)  Gill Wallis (Community Development)	Number of schools participating St John’s Davenant Roding Valley West Hatch King Harold Debden  Positive feedback from students and teachers	Annual ongoing



<b>Initiative: Integrated Offender Management (IOM)</b>						<b>Strategic Priority 2</b>
<b>Objective</b>	<b>Action(s)</b>	<b>Resources</b>	<b>Target date</b>	<b>Lead</b>	<b>Measurement</b>	<b>Date complete</b>
Work in partnership to bring together the management of repeat offenders into a more coherent structure to reduce crime & re-offending and improve public confidence in the criminal justice system	Support framework of Integrated Offender Management	£4750 £1000 allocated 2013-14		Neeve Bishop – Manager, Essex Probation	Probation to provide	Ongoing
Reduce re-offending by those offenders identified as causing most harm to people and communities	Regularly attend multi-agency problem solving meetings  Disseminate relevant intelligence to EFDC service areas, Housing ASB Investigators, ENOs	Existing resources and staff  Existing Resources	Ongoing	Essex Probation  Paul Gardener	Re-offending rates  Number of pieces of intelligence shared  Arrests  Number of cases referred  Reduced re-offending rates	
<b>Initiative: Sanctuary Scheme</b>						<b>Strategic Priority 3</b>
<b>Objective</b>	<b>Action(s)</b>	<b>Resources</b>	<b>Target date</b>	<b>Lead</b>	<b>Measurement</b>	<b>Date complete</b>
Support and develop a tenure neutral scheme to protect high risk victims of domestic violence (Sanctuary)	Set up small working party of key stakeholders (EFDC, ECFRS, Essex Police & Safer Places) to review cases and best practice  Identify best practice from other areas and implement where possible	Existing Staff  £2000 p/a jointly from EFDC Housing and Safer Communities	Ongoing	Russell Wallace EFDC Housing Needs  Paul Gardener EFDC Community Safety Officer	Number of schemes implemented  Cost benefit analysis  Reduction in repeat victimisation	Ongoing

<b>Initiative: Partnership Visits</b>						<b>Strategic Priority 3</b>
<b>Objective</b>	<b>Action(s)</b>	<b>Resources</b>	<b>Target date</b>	<b>Lead</b>	<b>Measurement</b>	<b>Date complete</b>
Provide support and reduce repeat victimisation to those at greatest risk of being victim of priority crime	Carry out joint Police / EFDC crime prevention surveys in the areas identified by the control strategy These currently relate to:- Burglary dwelling & artifice with identified risk factors High risk domestic abuse Serious ASB Other incidents involving risk to public safety	Essex Police Crime Reduction Officer  EFDC Community Safety Officer  £1,000 – EFDC Arson Kits office of the PCC £1140		Paul Gardener	Response to satisfaction surveys  Reduced repeat victimisation (when compared with district's average)	Ongoing
<b>Initiative: Public Space CCTV</b>						<b>Strategic Priority 4</b>
<b>Objective</b>	<b>Action(s)</b>	<b>Resources</b>	<b>Target date</b>	<b>Lead</b>	<b>Measurement</b>	<b>Date complete</b>
Develop and manage public space CCTV schemes in areas identified through analysis as hot spots	NIM compliant CPA from Analyst  Identify hot-spots	Adrian Petty CCTV Ops Officer EFDC  CCTV Support Officer EFDC		Adrian Petty	Systems functioning to required standard.  Crime reduction  Number of downloads aiding investigation and detection	Ongoing management of systems

<b>Initiative: Street Pastors</b>						<b>Strategic Priority 3 &amp; 4</b>
<b>Objective</b>	<b>Action(s)</b>	<b>Resources</b>	<b>Target date</b>	<b>Lead</b>	<b>Measurement</b>	<b>Date complete</b>
Identify vulnerable people, particularly the young, in the night time economy crime and disorder hotspots and offer them support and assistance where possible to keep free from harm.	The project has been very successful to date. Now looking to recruit more volunteers and secure further funding.		Ongoing 2013-14	Caroline Wiggins	Reduction in levels of ASB  Reduction in victims of violent crime	Ongoing
<b>Initiative: Safe &amp; Sound Epping Forest</b>						<b>Strategic Priority 3</b>
<b>Objective</b>	<b>Action(s)</b>	<b>Resources</b>	<b>Target date</b>	<b>Lead</b>	<b>Measurement</b>	<b>Date complete</b>
Provide a service which allows free or at cost upgrades of home security to reduce victimisation and repeat offending	Identify funding  Identify, recruit and train installer  Provide office space and relevant ICT systems  Identify Management structure	EFDC - £5,500 PCC Community Grant - £5,500	Ongoing	Jacqui Foile - VAEF	Number of surveys carried out  No offending after security fitted	Ongoing

<b>Initiative: E-Mail Families</b>						<b>Strategic Priority 4</b>
<b>Objective</b>	<b>Action(s)</b>	<b>Resources</b>	<b>Target date</b>	<b>Lead</b>	<b>Measurement</b>	<b>Date complete</b>
E-mail families crime reduction through improved communication	<p>Identify and organise social/economic groups with identified commonality into e-mail families</p> <p>Develop and manage a county wide Community Safety e-mail family to exchange ideas and best practice</p>	<p>Existing Resources</p> <p>Existing Resources</p>		<p>Tony Ellis Essex Police Crime Reduction Officer</p> <p>Paul Gardener EFDC Community Safety Officer</p>	<p>Number of groups formed</p> <p>Amount of information disseminated</p> <p>Amount of information disseminated</p>	
<b>Initiative: Redeployable Cameras</b>						<b>Strategic Priority 4</b>
<b>Objective</b>	<b>Action(s)</b>	<b>Resources</b>	<b>Target date</b>	<b>Lead</b>	<b>Measurement</b>	<b>Date complete</b>
Use the cameras for crime, disorder and environmental crime hot spot areas. Cameras to be overt and the appropriate signage displayed.	Ensure 'fit for purpose' cameras are maintained and accessible for deployment when required	Essex Police loaned 4 cameras EFDC £1600 SIM cards	April 2014	Adrian Petty	<p>Number of occasions cameras deployed</p> <p>Number of police requested downloads,</p>	

<b>Initiative: Restore Community Shops</b>						<b>Strategic Priority 3</b>
<b>Objective</b>	<b>Action(s)</b>	<b>Resources</b>	<b>Target date</b>	<b>Lead</b>	<b>Measurement</b>	<b>Date complete</b>
Support of a community centre in Debden Broadway providing a focal point for the community and a location for partners to signpost and deliver their services				Judy Lovell – Restore Community Church	Number of people engaging in consultations Number of attendees at launch Number of people who access services Police ASB data UK online number of people signing up Number of young people attending youth bus	Ongoing

Page 66

<b>Initiative: J9 Signposting project</b>						<b>Strategic Priority 3</b>
<b>Objective</b>	<b>Action(s)</b>	<b>Resources</b>	<b>Target date</b>	<b>Lead</b>	<b>Measurement</b>	<b>Date complete</b>
To increase number of business and community groups that can signpost DV victims	Provide free DV awareness training and DV packs and leaflets	£1000 – EFDC £1250 PCC Community Grant	April 2013 – March 2014	Caroline Wiggins	Number of business community groups that sign up to J9 Number of training courses provided Evaluation Feedback from courses	March 2014

<b>Initiative: Anti Social Behaviour</b>						<b>Strategic Priority 1, 3 &amp; 4</b>
<b>Objective</b>	<b>Action(s)</b>	<b>Resources</b>	<b>Target date</b>	<b>Lead</b>	<b>Measurement</b>	<b>Date complete</b>
Identify repeat and vulnerable victims of anti social behaviour	Develop Risk Assessment Matrix  Introduce a set of procedures which manage ASB complaints against identified risk	Existing staff and systems	April 2014	Paul Gardener	Reduction in volume calls for each repeat or vulnerable victim	
Maintain and deliver a partnership approach to ASB complaints	Continue with partnership working around ASB through ASB Coordinating Group		March 2014	ASB Investigators	Cases successfully resolved from meetings	
Increase public awareness of services provided to deal with ASB	Positive press releases informing residents of success stories around anti social behaviour  Multi-agency public surgeries with EFDC investigators and NPT PCSOs	Community Safety Team	Ongoing	ASB Investigators	Number of press releases  Feedback from press releases  Number of surgeries held and complaints dealt with at a local level	Ongoing
<b>Initiative: Community Engagements</b>						<b>Strategic Priority 4</b>
<b>Objective</b>	<b>Action(s)</b>	<b>Resources</b>	<b>Target date</b>	<b>Lead</b>	<b>Measurement</b>	<b>Date complete</b>
Raise awareness of Safer Communities initiatives and actions	Visit local events and provide information on activities and outcomes of the Safer Communities Team	Community Safety Team	Ongoing		Number of events attended	Ongoing

<b>Initiative: Night Time Economy</b>						<b>Strategic Priority 4</b>
<b>Objective</b>	<b>Action(s)</b>	<b>Resources</b>	<b>Target date</b>	<b>Lead</b>	<b>Measurement</b>	<b>Date complete</b>
Reduce level of crime and disorder related to local night clubs	Explore possibility of newly installed CCTV at hotspots being able to be transmitted to Essex Police Force Control Room and portable workstations of officers deployed to area	Community Safety Team EFDC  Essex Police	June 2013	Essex Police	Reduction in night club related ASB issues, more effective detection of offences when they occur.	
<b>Initiative: Lock 'em Out</b>						<b>Strategic Priority 3</b>
<b>Objective</b>	<b>Action(s)</b>	<b>Resources</b>	<b>Target date</b>	<b>Lead</b>	<b>Measurement</b>	<b>Date complete</b>
Continue to promote Lock 'em Out initiative of home security advice	<p>Liaise with &amp; obtain agreement from Planning over technical content</p> <p>Link future crime prevention campaigns to Lock 'em Out' branding</p> <p>Identify relevant emerging or seasonal trends and develop messages suitable to address</p>	Existing staff	<p>Ongoing</p> <p>Ongoing</p>	Paul Gardener Community Safety Officer	Booklets and leaflets produced and distributed on time	Ongoing



<b>Initiative: HomeSafe</b>						<b>Strategic Priority 4</b>
<b>Objective</b>	<b>Action(s)</b>	<b>Resources</b>	<b>Target date</b>	<b>Lead</b>	<b>Measurement</b>	<b>Date complete</b>
Continue to engage with local estate agents to provide home safety and security literature and advice to all persons moving into the district during 2014	Engage Estate Agents  Deliver packs to estate agents participating  Monitor success and re-supply	PCC funding £1,485	Ongoing through 2014	Paul Gardener  EFDC Community Safety Officer	Number of packs produced and distributed  Feedback from recipients	Ongoing 2014
Extend the scheme to EFDC tenants via Housing Options	Packs supplied to Housing Options		January 2014			

Page 69

<b>Initiative: Older Persons Crucial Crew</b>						<b>Strategic Priority 3</b>
<b>Objective</b>	<b>Action(s)</b>	<b>Resources</b>	<b>Target date</b>	<b>Lead</b>	<b>Measurement</b>	<b>Date complete</b>
Devise and implement a home safety and awareness event targeting older people, particularly to respond to emerging offences of Bogus callers and courier crime	Obtain funding to supply event  Identify stakeholders able to assist with the event  Secure a suitable venue  Identify and transport target group	PCC funding £2,800 EFDC £500  Partnership & Voluntary Sector  VAEF		Caroline Wiggins  Community Safety Manager EFDC	Number of persons attending  Reduction in offences being addressed	March 2014

<b>Initiative: Preventing bogus caller/rogue trader/repeat ASB victimisation</b>						<b>Strategic Priority 3</b>
<b>Objective</b>	<b>Action(s)</b>	<b>Resources</b>	<b>Target date</b>	<b>Lead</b>	<b>Measurement</b>	<b>Date complete</b>
Purchase 5 x portable CCTV systems suitable for simple installation in potential or repeat victims homes on a loan basis with the option to purchase	Identify suitable equipment  Obtain funding from PCC  Manage installation and monitoring	PCC £1052.88 EFDC 263.22			Reduction of crime and ASB  Preventing repeat victimisation  Reducing fear of crime	
<b>Initiative: West LPA Partnership Analyst</b>						<b>Strategic Priority 1, 2, 3, 4</b>
<b>Objective</b>	<b>Action(s)</b>	<b>Resources</b>	<b>Target date</b>	<b>Lead</b>	<b>Measurement</b>	<b>Date complete</b>
Manage and support West LPA Analyst on behalf of Essex Police, Brentwood, Thurrock and Harlow Community Safety Partnerships		PCC funding £6922.00 EFDC host the role on behalf of West LPA	Ongoing until March 2015	Paul Gardener Community Safety Officer	Production of Strategic Assessment and performance management reports	Ongoing
<b>Initiative: Handyperson Scheme</b>						<b>Strategic Priority 3</b>
<b>Objective</b>	<b>Action(s)</b>	<b>Resources</b>	<b>Target date</b>	<b>Lead</b>	<b>Measurement</b>	<b>Date complete</b>
Providing support to the councils Handyperson scheme by supplying security materials which can be fitted when a visit for minor repairs or maintenance is carried out	Identify and supply suitable equipment	£1000 EFDC	Ongoing 2014	Caroline Wiggins EFDC Community safety Team	Number of visits where security devices are fitted	Ongoing 2014

<b>Initiative: Design Out Crime</b>						<b>Strategic Priority 4</b>
<b>Objective</b>	<b>Action(s)</b>	<b>Resources</b>	<b>Target date</b>	<b>Lead</b>	<b>Measurement</b>	<b>Date complete</b>
Work with EFDC Service areas and Essex Police Crime Prevention and Architectural Liaison Officers to identify opportunities to design out crime	Maintain regular networking between service areas  Identify and offer advice	Within existing resources	Ongoing 2014	Paul Gardener Community Safety Officer	Number of referrals	Ongoing 2014
<b>Initiative: Electric Blanket Testing</b>						<b>Strategic Priority 4</b>
<b>Objective</b>	<b>Action(s)</b>	<b>Resources</b>	<b>Target date</b>	<b>Lead</b>	<b>Measurement</b>	<b>Date complete</b>
Work with ECC Trading Standards to carry out electric blanket safety testing in respect of elderly residents within the district	Advertise event Carry out testing	£399.99 EFDC	April 2014		Number of tests carried out	April 2014
<b>Initiative: Fire Safety Advice</b>						<b>Strategic Priority 1,3,4</b>
<b>Objective</b>	<b>Action(s)</b>	<b>Resources</b>	<b>Target date</b>	<b>Lead</b>	<b>Measurement</b>	<b>Date complete</b>
Smoke alarm and Home Fire Safety leaflet distribution	Awareness leaflets to be distributed to all relevant venues including doctors surgeries, libraries etc.	Within existing resources	Ongoing	Bryan Mansfield ECFRS Community Safety Team	Number of leaflets distributed and home fire safety visit referrals received.	Ongoing

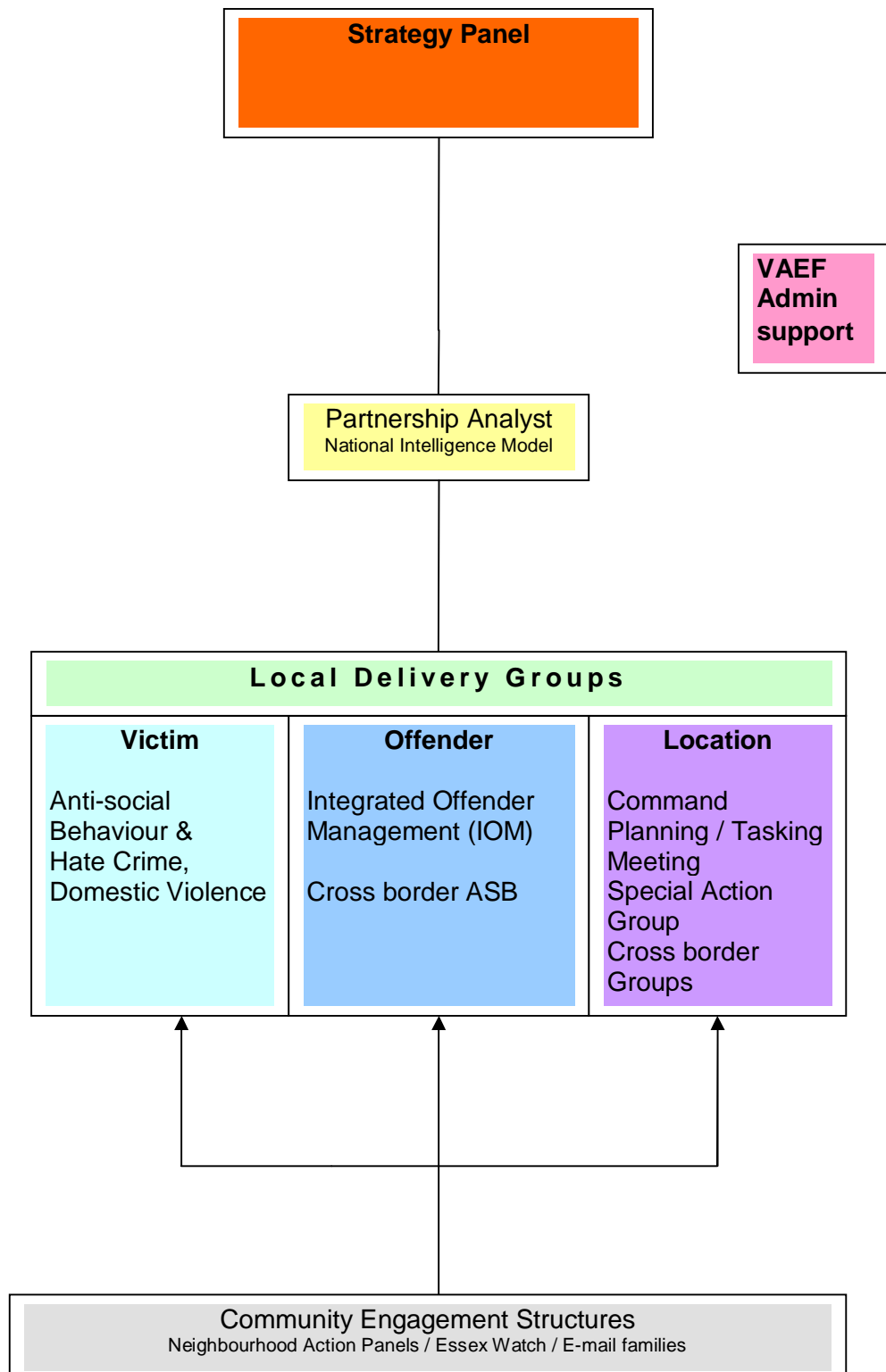
<b>Initiative: Fire safety for vulnerable groups</b>						<b>Strategic Priority 1,3,4</b>
<b>Objective</b>	<b>Action(s)</b>	<b>Resources</b>	<b>Target date</b>	<b>Lead</b>	<b>Measurement</b>	<b>Date complete</b>
To raise awareness of fire safety amongst vulnerable groups and various clubs	Presentations delivered to various groups including alzheimers, quadriplegic, over 50s, Womens Institute, Sure Start and nursery groups	Within existing resources	Ongoing	Bryan Mansfield ECFRS Community Safety Team	Number of home fire safety visit referrals received	Ongoing
<b>Initiative: Firebreak Youth Engagement Scheme</b>						<b>Strategic Priority 1,3,4</b>
<b>Objective</b>	<b>Action(s)</b>	<b>Resources</b>	<b>Target date</b>	<b>Lead</b>	<b>Measurement</b>	<b>Date complete</b>
To address issues of ASB raised by schools or partners	Deliver Firebreak courses	Within existing resources	Ongoing	Bryan Mansfield ECFRS Community Safety Team	Successful completion of course and achieving AQA award and portfolio. A three month follow up from participating school.	Ongoing

## Local Priority Selection Matrix 2014-15

Crime Type	Number	Volume	Seriousness	Predicted Direction of Travel	Performance	Public Concern	Repeat Victimization	Total Score	Rank
Anti-social Behaviour (LA)								<b>0</b>	<b>9</b>
Anti-social Behaviour (Police)	3639	4	3	0	2	2	4	<b>15</b>	<b>3</b>
Assault serious and other	538	3	4	2	3		3	<b>15</b>	<b>2</b>
Assault without injury	440	2	3	3	3		2	<b>13</b>	<b>5</b>
Burglary Dwelling (incl attempts)	751	3	4	0	4	3	1	<b>15</b>	<b>2</b>
Burglary Other (incl attempts)	417	2	4	3	2	2	1	<b>14</b>	<b>4</b>
Criminal Damage	838	3	3	2	2	2	1	<b>13</b>	<b>5</b>
Domestic Abuse	1143	4	4	4	3	2	4	<b>21</b>	<b>1</b>
Drug Offences	263	2		1	2	2	2	<b>9</b>	<b>8</b>
Other Theft	973	3	3	0	4		3	<b>13</b>	<b>5</b>
Public Order Offences	207	2		2	3	2	4	<b>13</b>	<b>5</b>
Racially/ religiously aggravated crime	64	1	2	1	3	2	2	<b>11</b>	<b>6</b>
Robbery	92	1	3	3	3	2	1	<b>13</b>	<b>5</b>
Sexual Offences	93	1	4	4	1	2	2	<b>14</b>	<b>4</b>
Shoplifting	321	2	1	2	1		4	<b>10</b>	<b>7</b>
TMV	1072	4	4	1	4	2	1	<b>16</b>	<b>2</b>
TOMV	358	2	4	1	4	2	1	<b>14</b>	<b>4</b>
Vehicle Interference	120	2	2	4	4		1	<b>13</b>	<b>5</b>

<u>Volume</u>	<u>Predicted DOT (iQuanta Projections)</u>	<u>Performance (iQuanta Comparison)</u>	<u>Repeat Victimization (%)</u>	<u>Seriousness</u>
4= 1000+ offences 3= 500-999 offences 2= 101-499 offences 1= 1-100 offences 0= 0 offences	4= Long term upwards trend, recent up 3= long term down, recent up 2= long term up, recent stable 1= long term up, recent down 0= Long term down, recent down	4= Top 3= Above Upper Bound 2= Average 1= Below Lower Bound 0= Bottom	4= 30%+ 3= 20-30% 2= 10-20% 1= 01-10% 0= 0%	4= £1,000,000+ 3= £100,000 - £999,999 2= £50,000 - £99,999 1= £1,000 - £49,999 0= Less than £1,000

# Epping Forest District Problem Solving Structure



VOLt structure – Victim – Offender – Location - time

## Local Delivery Groups

The Epping Forest Community Safety Partnership has established multi-agency working groups and initiatives that seek to address the key priorities.

- **Drug & Alcohol Reference Group (DARG)**

Address drug and alcohol issues which cause offending or increase the potential of victimisation.

- **Domestic Abuse**

Provide support to victims of domestic abuse through participation in the Multi-Agency Risk Assessment Conference (MARAC) and Domestic Violence Group. For the most serious cases provide support to victims to remain within the family home by introduction of sanctuary schemes when appropriate.

- **Task and Finish Groups**

A group of councillors and co-opted members tasked to examine a problem and produce recommendations. The group disbands once it reports.

- **Anti-Social Behaviour Coordinating Group and Hate Crime**

Provide a swift multi-agency response to person specific complaints of anti-social behaviour and hate crime.

- **Command Planning/Tasking Meeting**

Multi-agency responds to Neighbourhood Action Panel concerns, develops pre-planned responses, deals with locality issues

- **Cross Border Liaison**

Work in partnership with the East London & West Essex Serious Acquisitive Crime Group, North East London Cross Border PPO Group and Redbridge Safer Neighbourhoods Team to provide a co-ordinated cross border response to those perpetrators who offend in several geographic districts.

- **Integrated Offender Management (IOM)**

Currently work in progress being developed by Essex Police and Essex Probation, structures not yet finalised.

- **Special Action Group**

Used when serious crime and disorder issues need to be addressed to safeguard community cohesion and confidence. This is a multi-agency target focused group.



This page is intentionally left blank